

THESIS PROJECT - HELL VILLE EMPOWERMENT CENTRE - NOSY BE MADAGASCAR





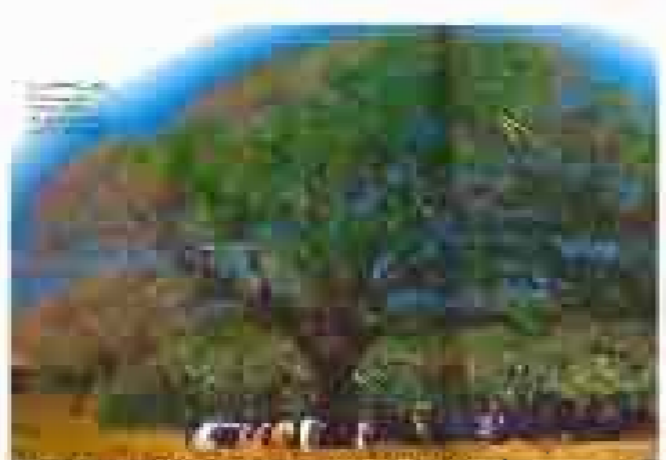
A. UNDERSTANDING THE BIGGER CONTEXT: MADAGASCAR & NOSY BE



POPULAR CONGREGATION OF THE KING AND HIS PEOPLE BY AN OPEN AIR AIR SLOPING TERRAIN



MARKET STANDBY SET UP UNDERNEATH UMBRELLAS TO PROVIDE SHADE AND ATTRACT AFFLUENT PASSERS-BY



A TAMARIND TREE AS THE CONNECTOR BETWEEN THE LIVING AND THE DEAD - THE PEOPLE GATHERING THEIR SPIRITS TOGETHER TO COMMUNICATE WITH THE UNKNOWN



WEEKLY POPULAR MARKETS THROUGHOUT THE COUNTRY



THE CAPITAL'S FRIDAY MARKET



STAIRS - VERY IMPORTANT URBAN DEVICES

1 SPATIAL MANIFESTATION OF MALAGASY CULTURE



MADAGASCAR VS. AFRICA



NOSY BE VS. MADAGASCAR



NOSY BE VS. ANTIRANANA PROVINCE

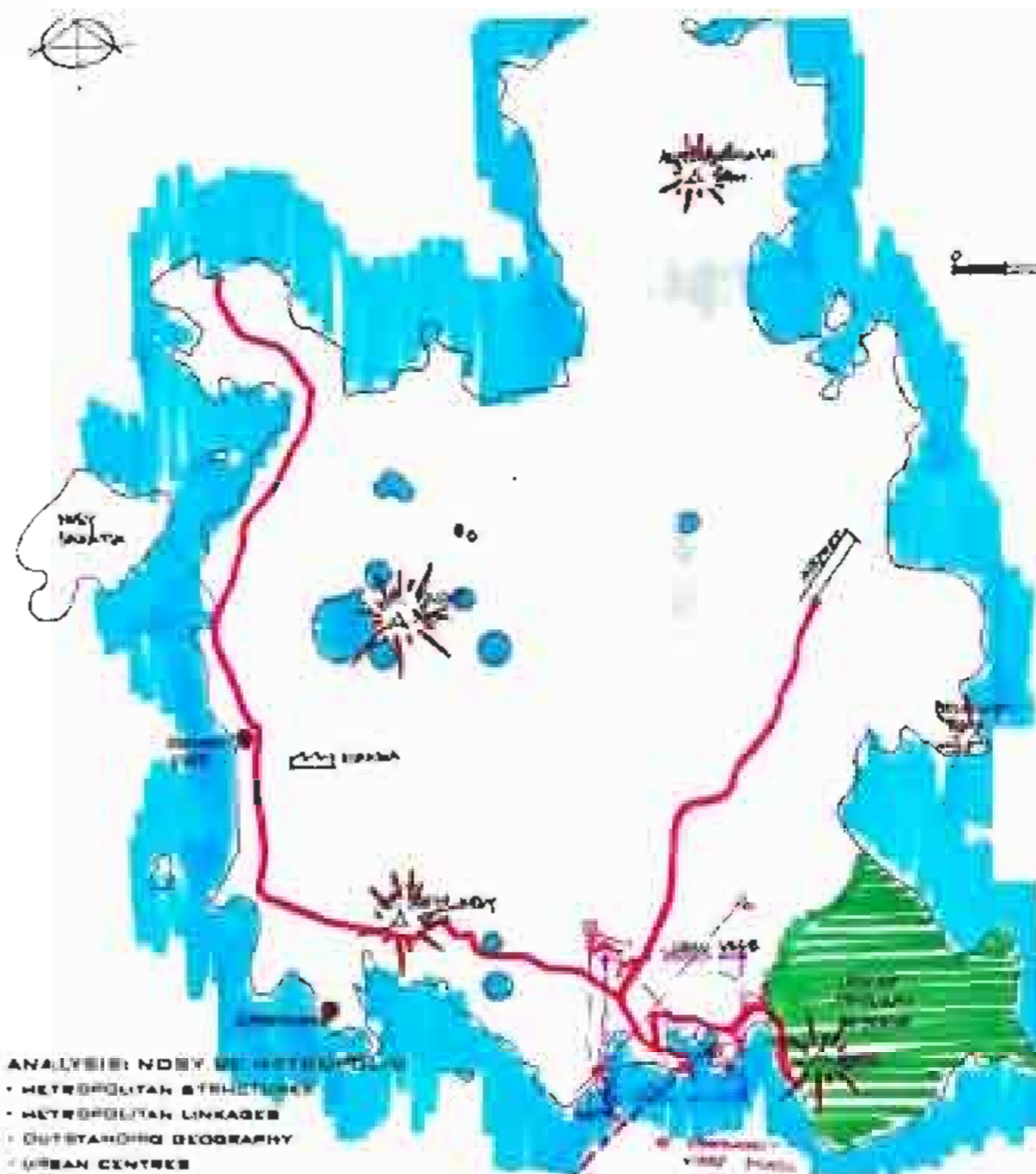


NOSY BE VS. AMBOANJA REGION



NOSY BE VS. SURROUNDING ISLANDS

2 LOCALIZING THE SITE



3 UNDERSTANDING NOSY BE

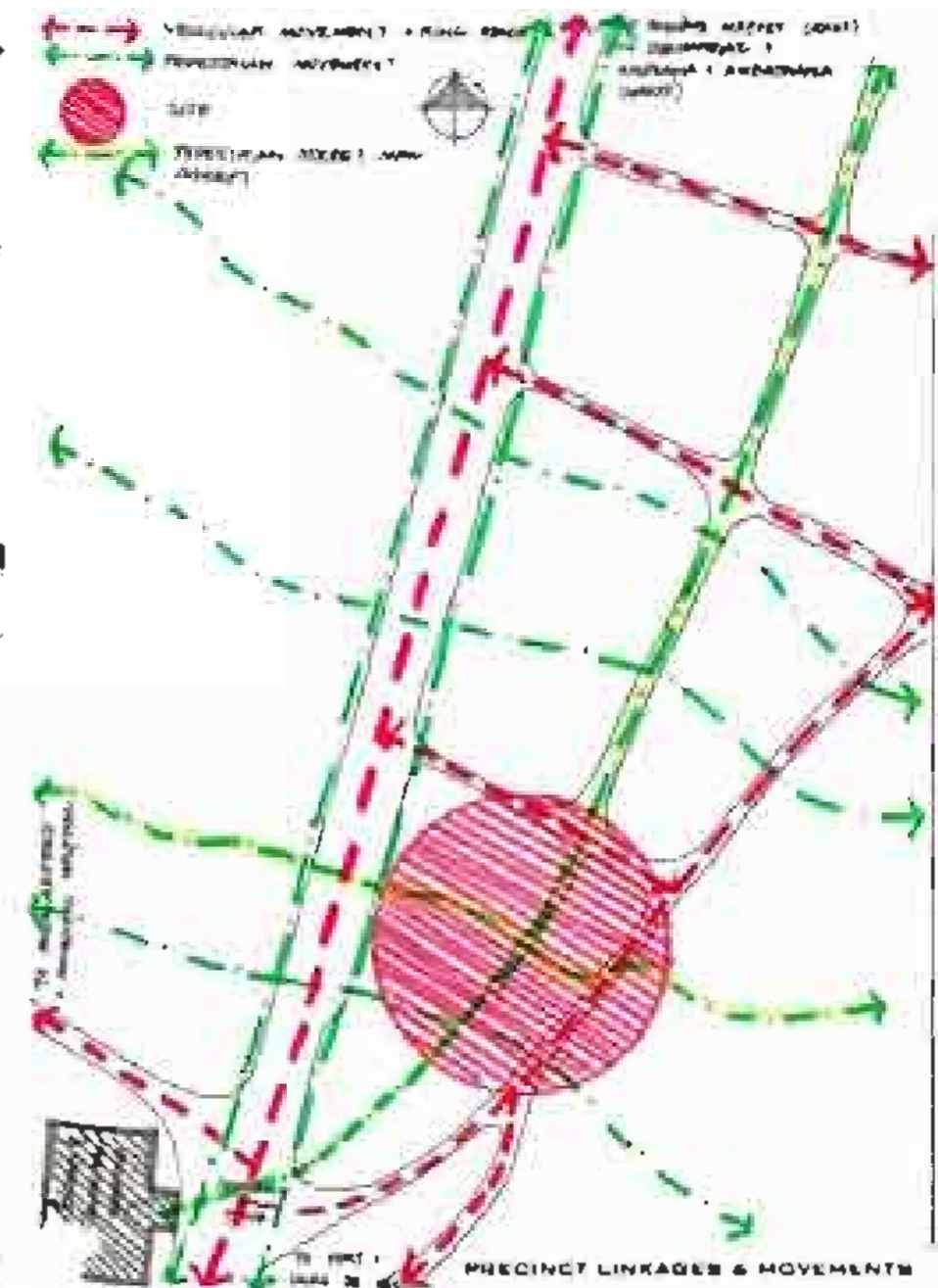
- ANALYSIS: NOSY BE METROPOLIS
- METROPOLITAN STRUCTURE
 - METROPOLITAN LINKAGES
 - OUTSTANDING GEOGRAPHY
 - URBAN CENTRES

3 SOME CONCLUSIONS

- MADAGASCAR'S STRONG CULTURAL CHARACTERISTICS:
 - ANCESTOR CULT - THE DEAD BRIDGE BETWEEN GOD & THE LIVING
 - ZOONICAL SIGNS & STAR/GUN ORIENTATIONS AS FRAMEWORK TO DAILY DECISION-MAKING & ACTIVITIES
 - STRONG SOCIAL LIFE AROUND TRADE (WEEKLY & MONTHLY MARKETS CONSISTING OF ROUNDS OF MARKET SPACE & TIME ALLOWING HOME TOWNS TO EXHIBIT AT THEIR FULL POTENTIAL) - FORMAL & INFORMAL
- NOSY BE URBAN PATTERNS:
 - DAILY MORNINGS: LIFE STARTS APPROXIMATELY BETWEEN 06.00 & 08.00 THE COOLEST TIMES OF THE MORNING FOR MORNING SHOPPING AND MAIN DAILY ACTIVITIES (WORK/SCHOOL)
 - DAILY MIDDAYS: BETWEEN 12.00 & 15.00 SINCE THEY ARE THE HOTTEST HOURS OF THE DAY WHEN ANY ACTIVITY BECOMES DIFFICULT TO EXECUTE
 - DAILY EVENINGS: STARTING AT 17.00 WHEN RESIDENTS COME OUT TO ENJOY THE COOL BREEZES IN THE LIVELY STREETS WHERE PEOPLE SHACK & DRINK, PLAY SPORTS, ETC
 - WEEK-ENDS: MOSTLY SPENT OUTDOOR BY THE SEA (ON THE COAST OR IN TOWN)

H E R E I S A L I S T O F T H E M O S T P O W E R F U L C O M M E N T A R I E S

C. UNDERSTANDING THE PRECINCT: SENGANINGA QUARTER



1 PRECINCT ANALYSIS

3 URBAN INTERVENTION DIAGRAMS

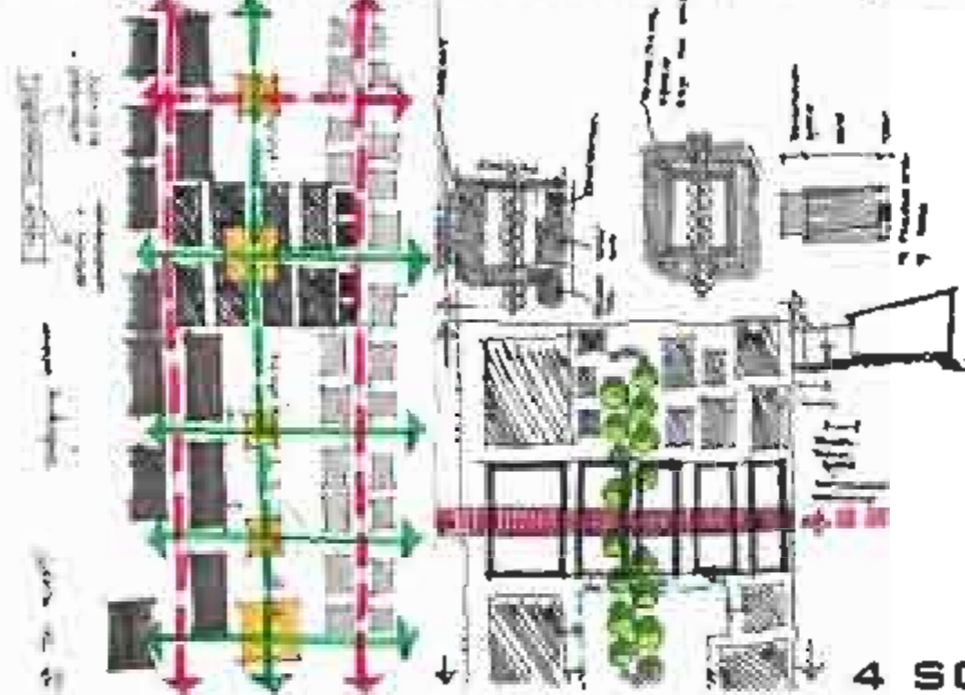
CHART 1: CLIMATIC SITUATION IN HOUST BE

HYDROLOGY	J	F	M	A	M	J	J	A	S	O	N	D	TOTAL
PRECIPITATION (mm)	110.0	115.0	225.0	180.0	160.0	130.0	110.0	110.0	110.0	110.0	110.0	110.0	1410.0
WIND DIRECTION	110.0	110.0	110.0	110.0	110.0	110.0	110.0	110.0	110.0	110.0	110.0	110.0	110.0
WIND SPEED (km/h)	110.0	110.0	110.0	110.0	110.0	110.0	110.0	110.0	110.0	110.0	110.0	110.0	110.0

CHART 2: POPULATION NUMBERS - YEAR 2002 & 2003

AGE GROUP	YEAR	AGE 0-3				AGE 4-17				AGE 18-59				AGE 60+		TOTAL	STRANGERS > AGE 11	TOTAL	
		M	F	M	F	M	F	M	F	M	F	M	F						
0-3	2002	100	100	100	100	100	100	100	100	100	100	100	100	100	100	100	100	100	100

2 SOCIAL & CLIMATIC DATA



- URBAN ENERGIES AROUND MOVEMENT LINKAGES
- 2 TYPES OF PEDESTRIAN MOVEMENTS:
 - URBAN (ALONG MAIN URBAN STRIP OF ACTIVITIES - BOULEVARD GENERAL DE GAULLE) CONNECTING METROPOLITAN MIXED-USE STRUCTURES & FUNCTIONS
 - DOMESTIC (ALONG SECONDARY STREETS AS WELL AS PEDESTRIAN CORRIDORS CONNECTING THE DIFFERENT RESIDENTIAL LAYERS)
- USERS & ACTIVITIES ASSOCIATED WITH LINKAGES:
 - URBAN LAYER: VISITORS & ALL TYPES OF RESIDENTS AS MAIN USERS
 - DOMESTIC LAYER: LOCAL RESIDENTS SETTING ONTO THE MAIN STRIP OF ACTIVITIES - LOCAL ACTIVITIES; LIVING ROOMS EXTENDED INTO BACK ALLEYS & SECONDARY STREETS

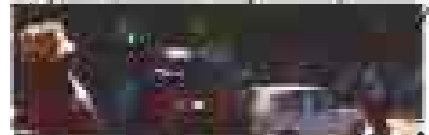
4 SOME CONCLUSIONS

FORM - V - FORM

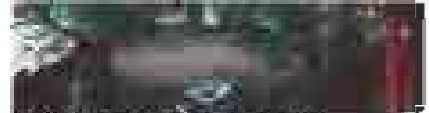
E. UNDERSTANDING THE SITE & ITS SURROUNDINGS



SITE ROOF LINES WITH VIEW OF C.N.R.O. HILL IN THE HORIZON



VIEW ONTO THE SITE FROM THE BOULEVARD GENERAL DE GAULLE



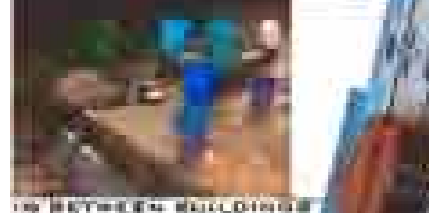
VIEW ONTO THE SITE FROM ANKOY COMMERCIAL GALLERY



IN BETWEEN BUILDINGS ACTIVE TIES: INFORMAL TRADE



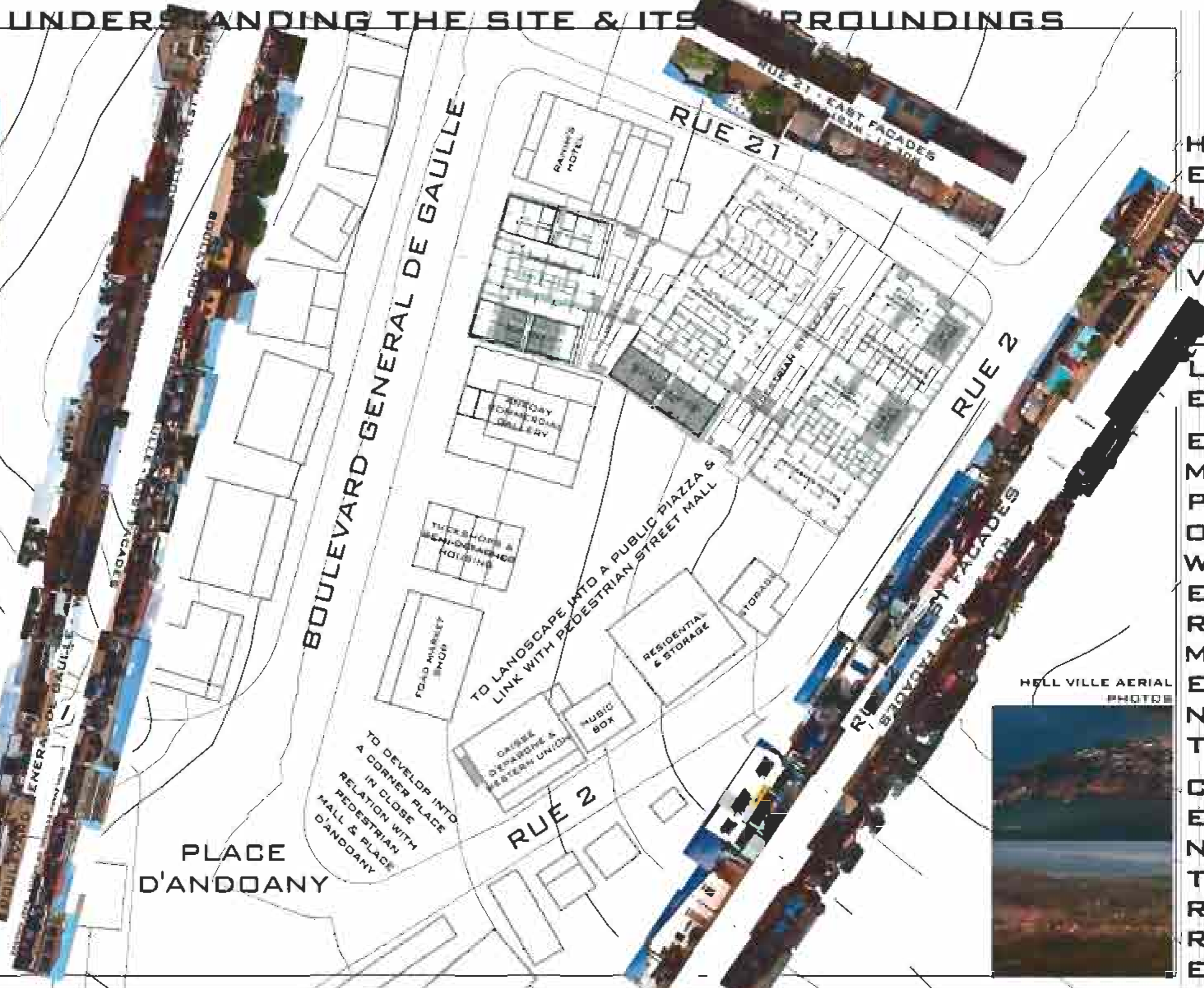
IN BETWEEN BUILDINGS ACTIVE TIES: PLAYING CHILDREN



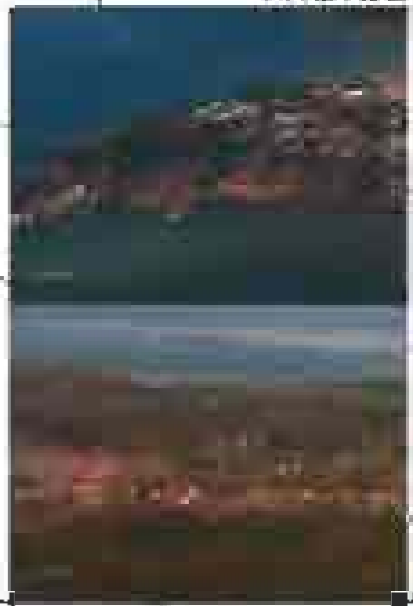
IN BETWEEN BUILDINGS TIES: DRAINAGE ISSUES



IN BETWEEN BUILDINGS TIES: SOCIAL NEIGHBORS



HELL VILLE AERIAL PHOTOS



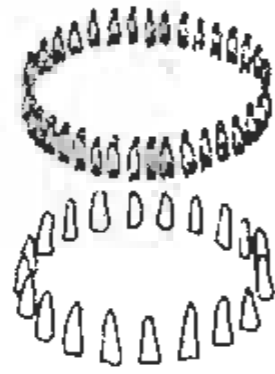
E
M
V
K
J
M
M
O
Z
M
R
R
M
H
Z
M
C
H
Z
M
R
R
M

F. THEORETICAL CONTEXT: TROPICALISM + PLACE-MAKING + COMMUNITY EMPOWERMENT

SOCIAL GEOMETRY

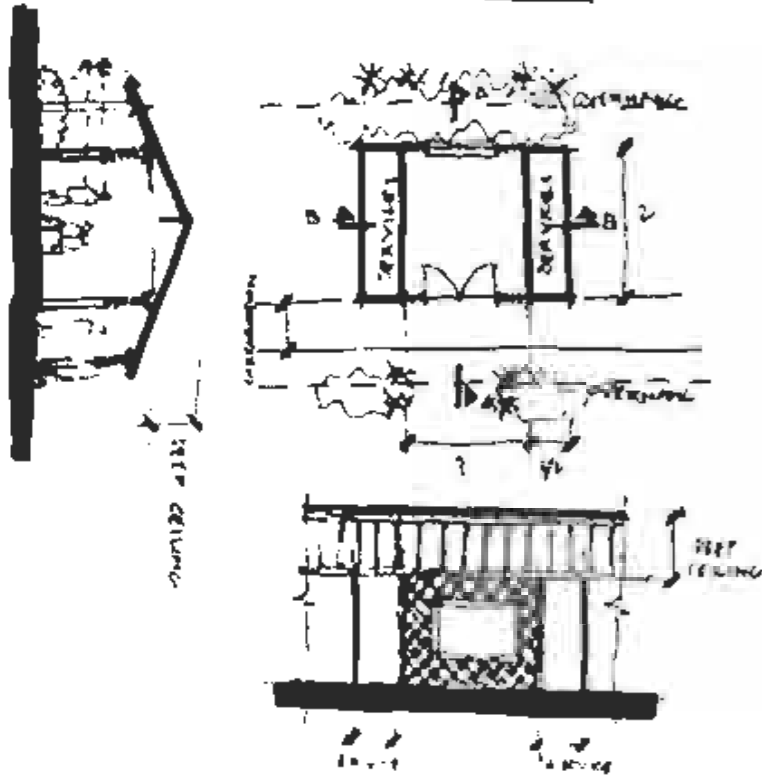


DIAGON LINE
"Analyzing Architecture" (p.14)



A STRONG CIRCLE MAKES A STRONG PERIPHERAL ELEMENT
S STRONG
"Analyzing Architecture" (p.14)

SPATIAL THICKNESS

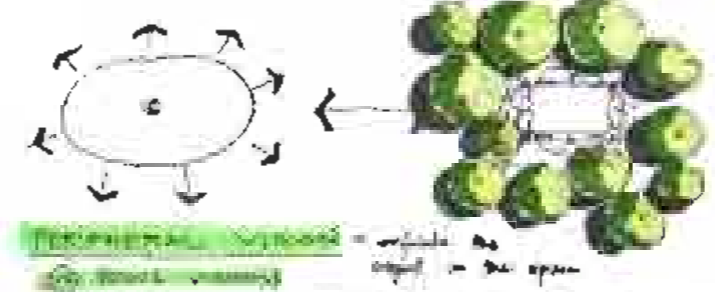
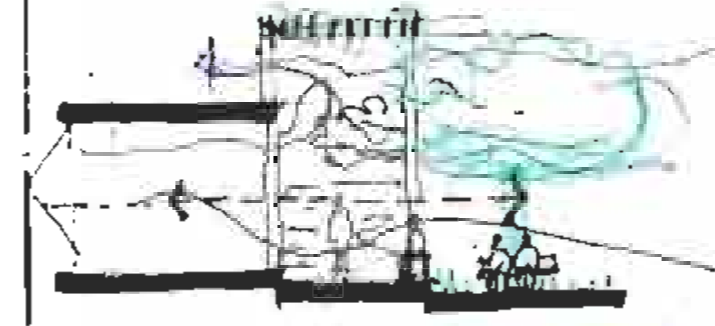


1 CONCEPTUAL GUIDELINES IN TERMS OF SPACE-MAKING:

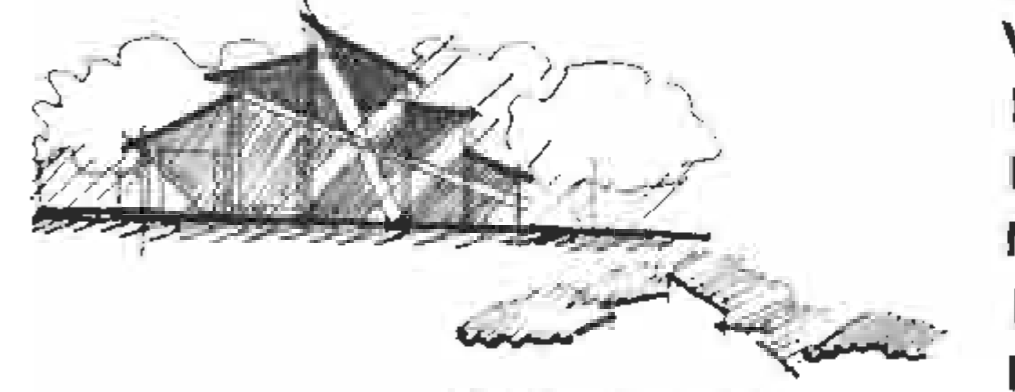
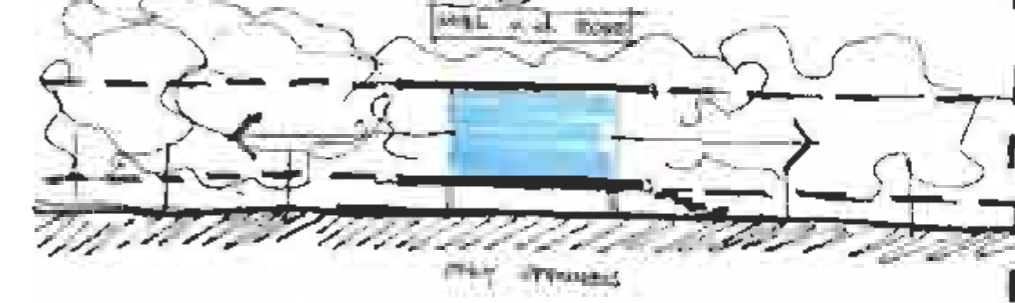
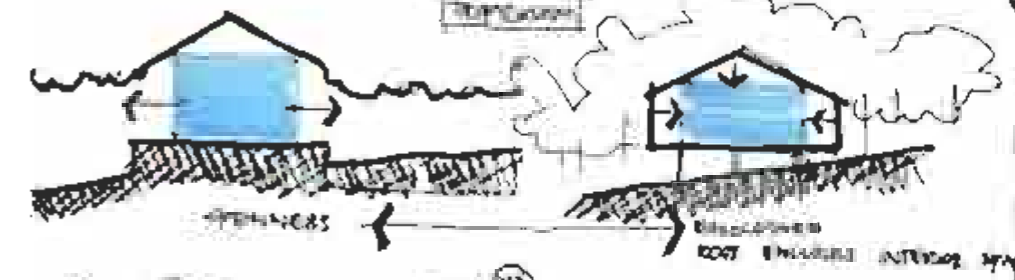
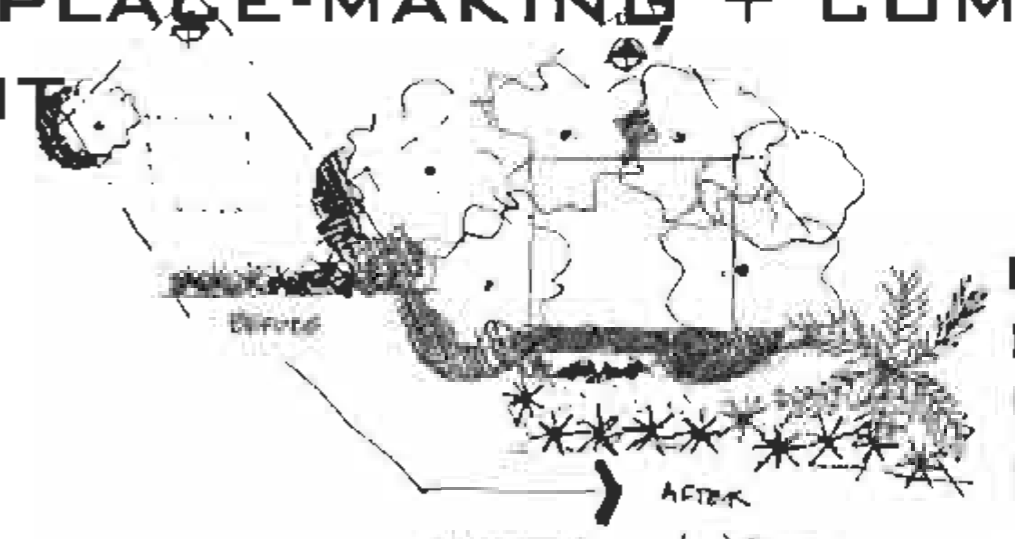
- MAXIMIZING CROSS VENTILATION
- SHALLOW SPACE OPEN AT LEAST AT TWO OPPOSITE ENDS
- SERVICES WRAPPING THE MAIN ACTIVITY SPACES
- SERVICES CIRCULATION + STORAGE + SPECIALTY ENGINEERING (PLUMBING/DRAINAGE/ELECTRICAL/MECHANICAL/ETC)
- DEEP CEILING AND SUSPENDED FLOORS TO HELP WITH HUMIDITY

2 RE-INTERPRETING LISA HESCHONG & JUHANI PALLASMAA IN TERMS OF PLACE-MAKING:

- PLACE-MAKING = MAXIMIZING EXPERIENCES
- MAXIMIZING EXPERIENCES QUALITY + COMFORT
- COMFORT = DEALING WITH CLIMATE THEREFORE SUN (HEAT) AND HUMIDITY (MAXIMIZING THE BREEZE MOVEMENTS INSIDE THE BUILDING)
- COMFORT = BELONGING TO THE SPACE THEREFORE OPTIONS ARE GIVEN TO TAKE CONTROL & PARTICIPATE WITH THE ENVIRONMENT
- QUALITY = DIVERSITY OF EXPERIENCES INCLUDING CONTRAST, CONTINUITY, ETC OF THE DIFFERENT ARCHITECTURAL ELEMENTS (LIGHT & SHADE, MATERIALS, OPENNESS & ENCLOSURE, IN-BETWEEN SPACES, INSIDE & OUTSIDE SPACES, ETC)
- QUALITY = INTERCONNECTION BETWEEN INSIDE SPACES AND NATURE (PERIPHERAL VISION)



- TROPICALISM - SOME CONCLUSIONS:
- NATURE & BUILT STRUCTURES TREATED THE SAME WAY IN TERMS OF SPACE DEFINITION SINCE ACTIVITIES IN THE TROPICS CAN HAPPEN AS EQUALLY INSIDE AND OUTSIDE
 - SPACE DEFINING ELEMENTS = CANOPIES (TREES OR ROOF) + FLOORS & HORIZONTAL PLANES (ENHANCING PERIPHERAL VISION)
 - MOST IMPORTANT ARCHITECTURAL ELEMENT: SHADOW (SHADOW LEVELS: DARKNESS - SEMI DARKNESS - LIGHT)



TROPICALISM + PLACE-MAKING + COMMUNITY EMPOWERMENT

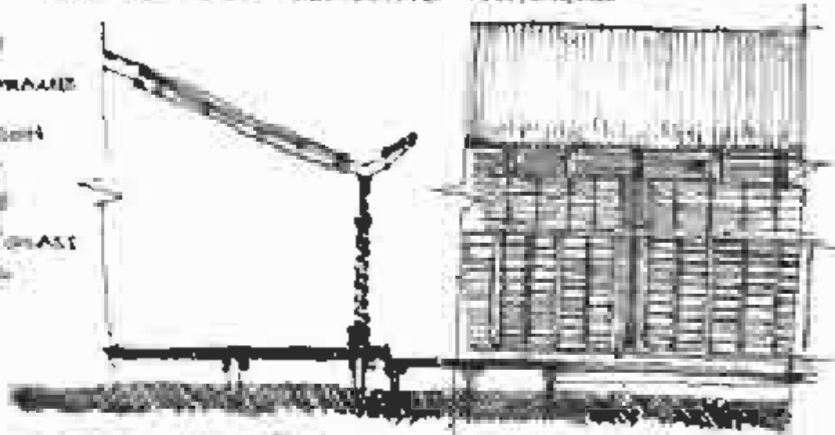
G. ARCHITECTONICS PRECEDENT WORK: TROPICAL AUSTRALIAN ARCHITECTURE

PAVILION STRUCTURES

• **FEB WEE RESTAURANT**, TROPIC ARCHITECTS, DARWIN, AUSTRALIA

- LIGHT INTERIOR
- LIGHT FILLED SPACES → STRUCTURAL EXPRESSION
- E + W → ENCLOSED ☺ E + N → OPERABLE GLASS LOUNGES
- ENVIRONMENTAL STRATEGIES • PASSIVE DESIGN TECH
- → SHADING + ORBITING OF WALLS & CEILING + USE OF HEAT-REFLECTIVE MATERIALS

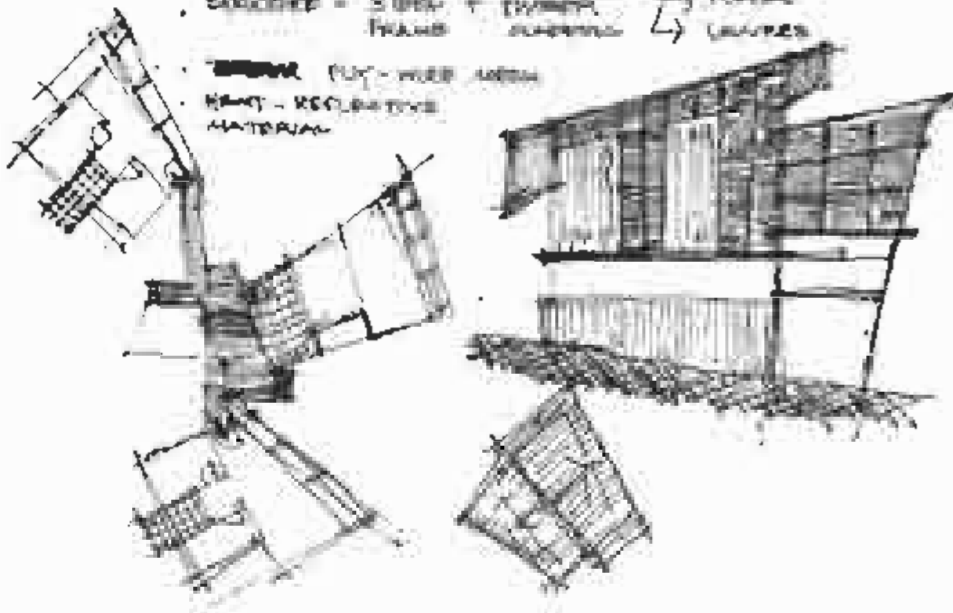
STRUCTURE
STEEL FRAME
OPERATION
GLASSING
MOVABLE
LOUNGES / GLASS
CLADDING



• **KORRAK HOUSE**, TROPIC ARCHITECTS, NOONAMAH, AUSTRALIA

CONCEPT = STEEL + TIMBER FRAME → FLOOR LOUNGES

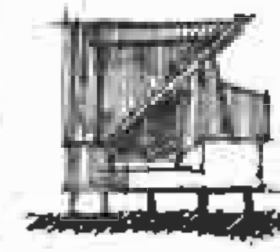
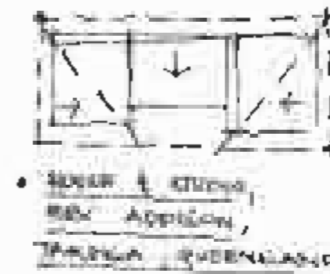
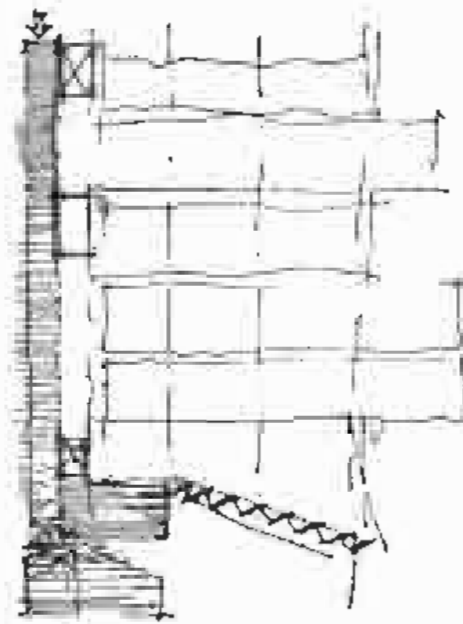
- SHADE (PLY-WOOD AREA)
- HEAT-REFLECTIVE MATERIAL



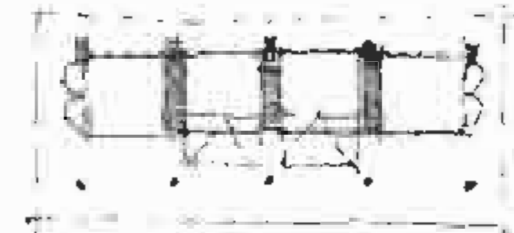
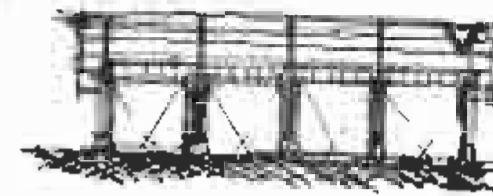
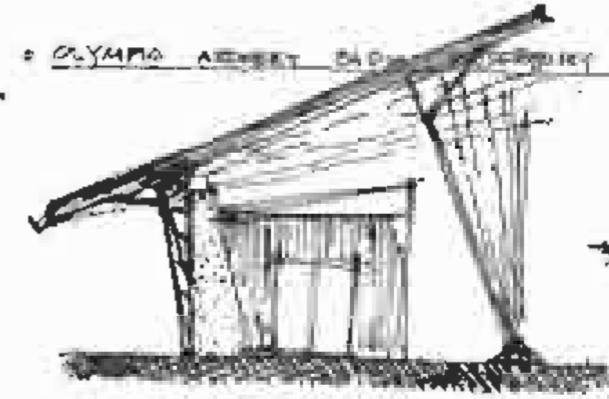
• **BRISBANE COAST UNIVERSITY LIBRARY**, GREENLAND, AUSTRALIA

BY BLIGH WALKER FIELD + ASSOC. W/ JOHN MAINWARING & ASSOC.

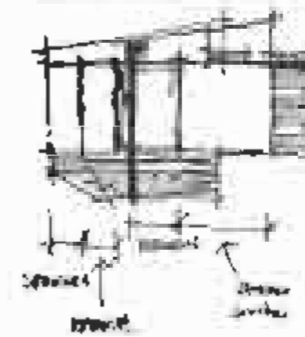
- SYMBOL OF LEARNING
- SMOOTH ROOF
- TRADITIONAL WOOD JOBS



• **OLYMPIC AIRPORT**, EAST MERRIBURY TAFE, SYDNEY



• **REVERES & PAT HOUSE**, MERRIBURY & PATO, SYDNEY



SOME CONCLUSIONS:

- STRUCTURES = FRAME TYPES (IN CONCRETE, STEEL OR TIMBER) TO SUPPORT LIGHTWEIGHT ROOFS
- MAJORITY PILOTI STRUCTURES = "TOUCH THE EARTH LIGHTLY" • FOR HUMIDITY & TOPOGRAPHY PURPOSES (NOT TOO MUCH EARTH MOVED)
- ROOFS = MONO-PITCHED WITH A TWIST TO MAXIMIZE SOUTH LIGHT & VIEWS WHILE KEEPING THE HEAVY RAINS AWAY
- CORRUGATED ROOFS = SUN REFLECTORS & LIGHTWEIGHTNESS
- PAVILION STRUCTURES = INDEPENDANT ENTITIES WITH SIMILAR SPATIAL FRAMEWORK, SIZES DIFFERING IN RELATION WITH ACTIVITIES & USERS
- CIRCULATION SPACE = MOST IMPORTANT FEATURE SINCE IT TIES THE PAVILIONS TOGETHER - CIRCULATION SPACE MAXIMIZES THE VIEWS AROUND THE SITE & THE PROJECTS

F E L L E M P O W E R M E N T C E N T R E

H. PROGRAMME PRECEDENT WORK: COMMUNITY CENTRES

SOME CONCLUSIONS:

- SERVICE SPACES TO HAVE: PUBLIC TOILETS WITH WASHING FACILITIES ALSO CATERING FOR DISABLED PEOPLE (INTEGRATED DESIGN) + MAIN CIRCULATION SPACES (HORIZONTAL & VERTICAL) + SERVICE & STORAGE SPACES AS WELL AS LOBBY AREAS ADJOINING MAIN ACTIVITY SPACES SUCH AS EXHIBITION GALLERIES, CAFES & RESTAURANTS, WORKSHOPS, ETC

- MAIN ACTIVITY SPACES = TO BE EASILY ACCESSIBLE & HIGHLY VISUAL THROUGHOUT THE BUILDING(S)

- MAIN ACTIVITY SPACES TO INCLUDE: INFORMATION COUNTER + MULTIPURPOSE (FLEXIBLE) INSIDE & OUTSIDE SPACES + EDUCATIONAL ROOMS

- MOST IMPORTANT AREA - CIRCULATION/CENTRAL ORGANISING SPACE ADJOINING THE MAIN ACTIVITY ROOMS + VERTICAL MOVEMENT DEVICES (RAMPS, STAIRS, LIFTS, ELEVATORS)

CHILDREN'S RETREAT, THE ARCHITECTURE ALLIANCE, SONNA HARYANIA - INDIA

- PROGRAMME BRIEF
- ADMIN. FACILITY
 - DINING FACILITY
 - TOILETRIES + WASHING FACILITIES
 - TEACHING ROOMS
 - CARETAKER'S ACCOM.
 - AMPHITHEATRE
 - STAFF HOUSING

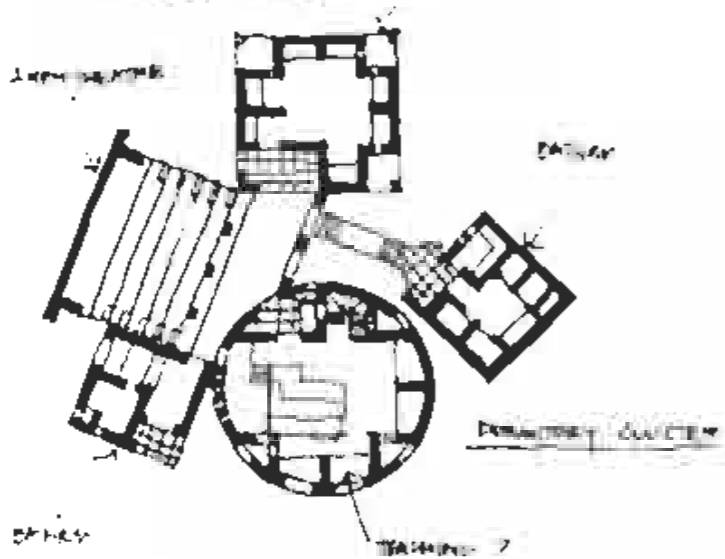
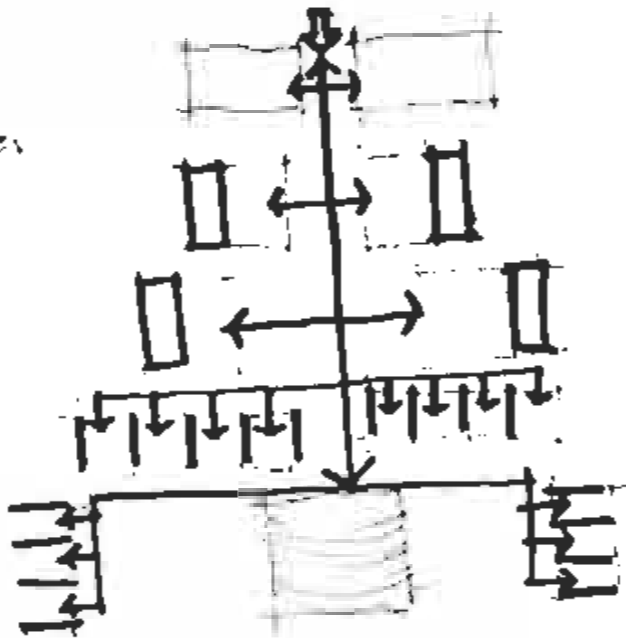
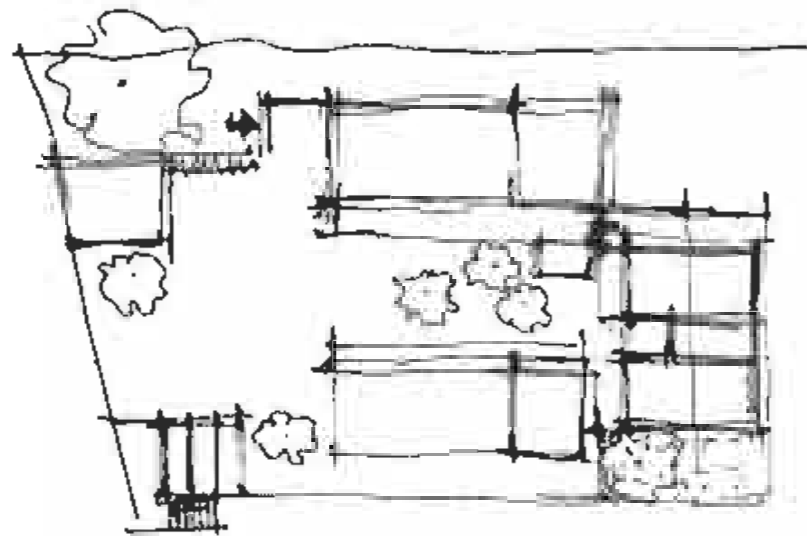


DIAGRAM:



WOMEN'S CENTRE, HOLLANDEN - REUTER - SANDMAN ARCHITECTS, RUFISPOU - SENEGAL



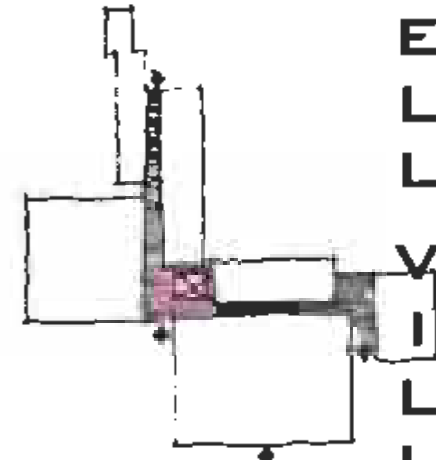
STRUCTURE = CONCRETE FRAME + CONCRETE BLOCKS WALL
 MASONRY CONSTR. = THERMAL MASS (GOOD IN HOT DRY AREAS)

- FOCUS FOR LOCAL GROUPS
- RECEPTION CENTRE FOR RURAL WOMEN
- CRAFT FACILITY FOR WOMEN
- CONTENT = MALE-DOMINATED SOCIETY
- VERNACULAR SYMBOLISM
- WEST AFRICAN PERIMETER WALL + COURTYARD ARCH.

EESTINMETSA COMMUNITY SERVICE CENTRE, ARKITEHTITOIMISTO LAHDENMAA

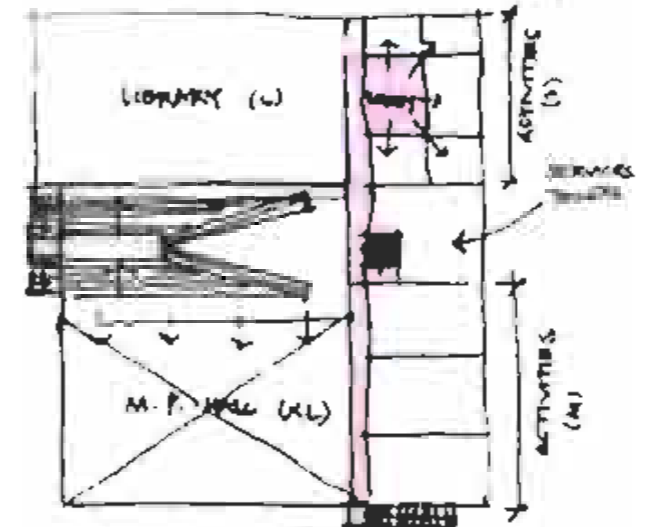
MAHLAMAKI, ESPOO - FINLAND

- mental healthcare facilities → alcohol & drug counselling
- day-care centre
- meeting place
- recreational facility
- dental care
- home nursing



COMMUNITY CENTRE, SÄBY & INDUSTRUP ARKITEKT, MADISTEN, JYVASKYLÄ, FINLAND

- multipurpose hall
- library
- activity + service wing
- stairway + adjoining cafe
- central organising space + dynamic
- stair + ramp → usable as theatre
- car + playroom + internet cafe + exhibition space



NEIGHBOURHOOD CENTRE, PERTE ANDRUSCH ARCHITECTS, COPENHAGEN DENMARK

- library
- cafe
- youth centre
- multipurpose hall

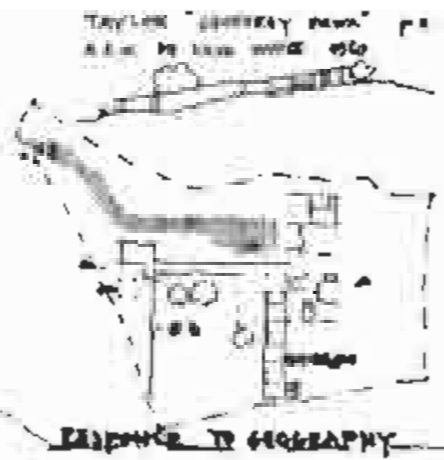
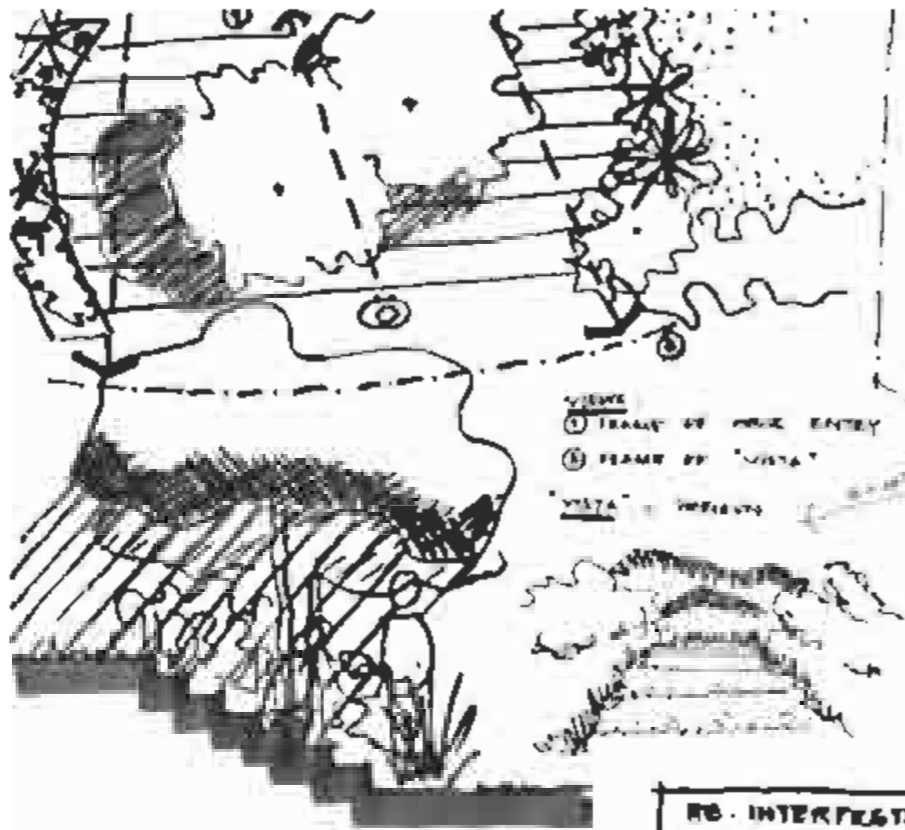


SUNDPARK KINDERGARTEN, NINA & HANSEN ARKITEKTER, COPENHAGEN, DENMARK



H
E
L
L
O
L
L
E
M
P
O
W
E
R
M
E
N
T
E
R
M
O
D
E
R
N

I. SPACE & PLACE-MAKING PRECEDENT WORK: GEOFFREY BAWA



SOME CONCLUSIONS:

SPACE-MAKING (SPACE DEFINITION):
 - DIFFERENTIATION BETWEEN OUTSIDE AND INSIDE SPACE - WALLS (MASONRY) & ROOFS (TILED) & CHANGE OF SURFACE TREATMENT
 - SPATIAL HIERARCHY TRANSLATED BY LIGHTING LEVELS

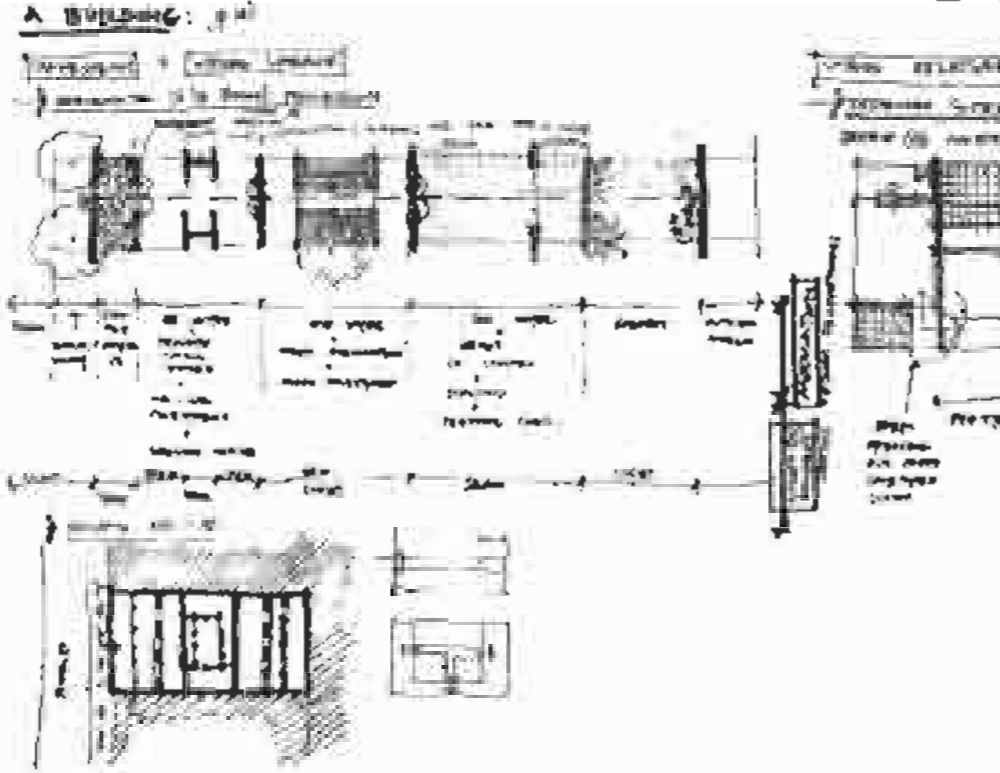
PLACE-MAKING - MEANINGFUL EXPERIENCES:
 - TRANSITIONAL SPACES BETWEEN INSIDE & OUTSIDE CELEBRATED BY THE PLACEMENT OF ARTS & CRAFTS IN THE COURTS, ADDED WATER FEATURES IN THE PRIVATE COURTYARD, INDIGENOUS PLANTING ENRICHING THE FLAVOURS, ETC
 - VISUAL LINKAGES IN RELATION WITH CIRCULATION SPACES
 - ANALOGY OF CIRCULATION SPACES WITH MOVIES:
 - CORRIDOR WITH STAIRS - STORY-BOARDS
 - VIEWS & VISUAL LINKAGES - EPISODES & OR SCENARIOS
 - MAIN ACTIVITY SPACES ALWAYS IN RELATION WITH OUTSIDE SPACE THROUGH FRAMED VISTAS/VIEWS OR PHYSICALLY WITH A DOOR LEADING TO A PRIVATE COURTYARD, THEREFORE ACTIVITY + ENRICHED EXPERIENCE

ANALYZING GEOFFREY BAWA'S ARCHITECTONICS

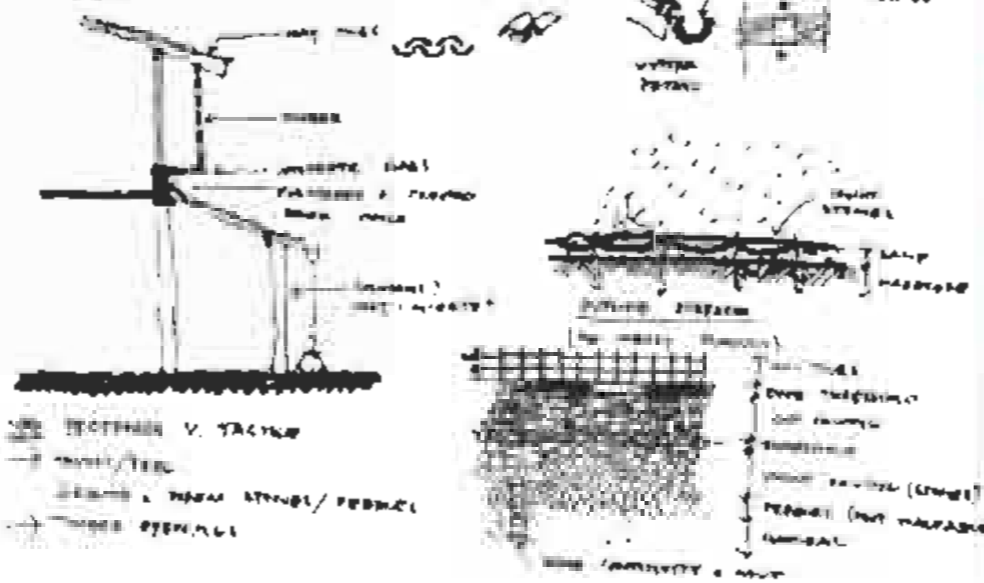
RE-INTERPRETATION OF ENTRY STAIR-CASE BY GEOFFREY BAWA

ENTRY STAIRCASE (ONE SIDE TRAPDOOR)
 + COMFORTABLE WALK AREA
 + THERE IS NO TRAPDOOR SHOW-UP/CANYON
 + STAIRWAY 100% UP

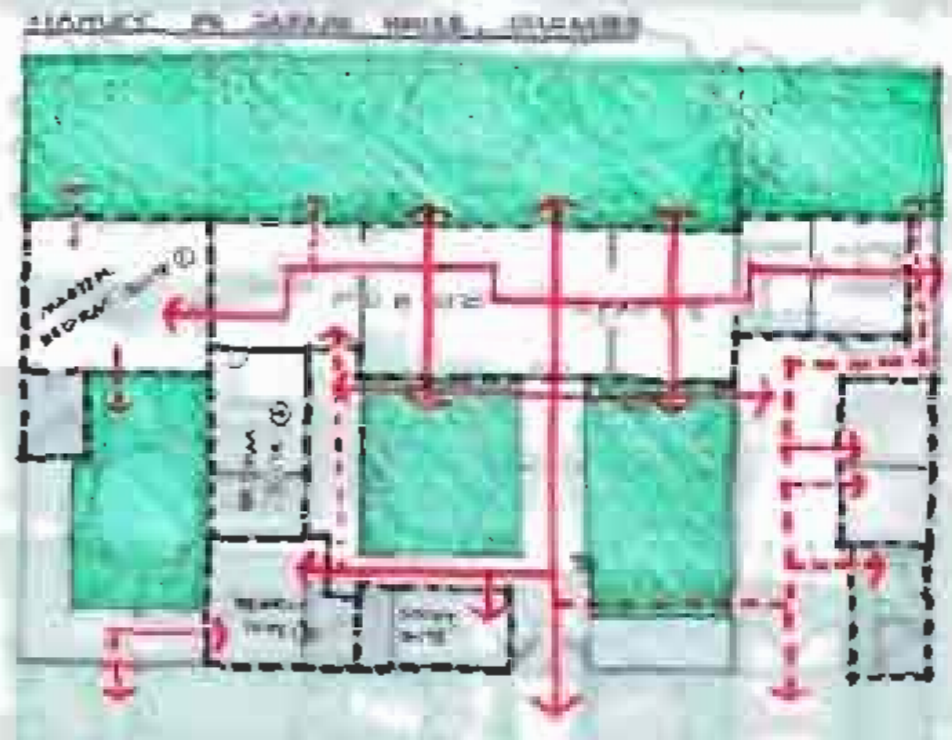
IMAGINING & RE-INTERPRETING BAWA'S WORDS ON HOW TO UNDERSTAND A BUILDING:



ENA DE SILVA HOUSE, COLOMBO



1. MAIN CIRCULATION (STAIR, HALL, CORRIDOR) + VISUAL LINKAGES
2. VISUAL LINKAGES - CORRIDOR + DOORS (LEADING TO MAIN COURTYARD)
3. VISUAL LINKAGES (LEADING TO MAIN COURTYARD)
4. VISUAL LINKAGES
5. VISUAL LINKAGES



E L L V I L L E P O W E R M E N T C O M P A N Y

J TECHNICAL DOCUMENTATION: THE CLIENTS/USERS

INTERESTED PARTIES

THESE ARE THE MAIN INTERESTED PARTIES OF THE PROJECT. THE CLIENTS AND USERS OF THE PROJECT ARE THE MAIN INTERESTED PARTIES OF THE PROJECT. THE CLIENTS AND USERS OF THE PROJECT ARE THE MAIN INTERESTED PARTIES OF THE PROJECT.

ARTISTS & CRAFTS PEOPLE USER CATEGORY

CATEGORY

ARTISTS & CRAFTS PEOPLE USER CATEGORY

ARTISTS & CRAFTS PEOPLE USER CATEGORY

ARTISTS & CRAFTS PEOPLE USER CATEGORY

ARTISTS & CRAFTS PEOPLE USER CATEGORY

ARTISTS & CRAFTS PEOPLE USER CATEGORY

ARTISTS & CRAFTS PEOPLE USER CATEGORY

ARTISTS & CRAFTS PEOPLE USER CATEGORY

ARTISTS & CRAFTS PEOPLE USER CATEGORY

ARTISTS & CRAFTS PEOPLE USER CATEGORY

ARTISTS & CRAFTS PEOPLE USER CATEGORY

ARTISTS & CRAFTS PEOPLE USER CATEGORY

ARTISTS & CRAFTS PEOPLE USER CATEGORY

ARTISTS & CRAFTS PEOPLE USER CATEGORY

ARTISTS & CRAFTS PEOPLE USER CATEGORY

ARTISTS & CRAFTS PEOPLE USER CATEGORY

ARTISTS & CRAFTS PEOPLE USER CATEGORY

ARTISTS & CRAFTS PEOPLE USER CATEGORY

ARTISTS & CRAFTS PEOPLE USER CATEGORY

ARTISTS & CRAFTS PEOPLE USER CATEGORY

ARTISTS & CRAFTS PEOPLE USER CATEGORY

ARTISTS & CRAFTS PEOPLE USER CATEGORY

ARTISTS & CRAFTS PEOPLE USER CATEGORY

ARTISTS & CRAFTS PEOPLE USER CATEGORY

ARTISTS & CRAFTS PEOPLE USER CATEGORY

ARTISTS & CRAFTS PEOPLE USER CATEGORY

ARTISTS & CRAFTS PEOPLE USER CATEGORY

ARTISTS & CRAFTS PEOPLE USER CATEGORY

ARTISTS & CRAFTS PEOPLE USER CATEGORY

ARTISTS & CRAFTS PEOPLE USER CATEGORY

ARTISTS & CRAFTS PEOPLE USER CATEGORY

ARTISTS & CRAFTS PEOPLE USER CATEGORY

ARTISTS & CRAFTS PEOPLE USER CATEGORY

ARTISTS & CRAFTS PEOPLE USER CATEGORY

ARTISTS & CRAFTS PEOPLE USER CATEGORY

ARTISTS & CRAFTS PEOPLE USER CATEGORY

STUDENT'S USER CATEGORY

STUDENT'S USER CATEGORY

STUDENT'S USER CATEGORY

STUDENT'S USER CATEGORY

STUDENT'S USER CATEGORY

STUDENT'S USER CATEGORY

STUDENT'S USER CATEGORY

STUDENT'S USER CATEGORY

STUDENT'S USER CATEGORY

STUDENT'S USER CATEGORY

STUDENT'S USER CATEGORY

STUDENT'S USER CATEGORY

STUDENT'S USER CATEGORY

STUDENT'S USER CATEGORY

STUDENT'S USER CATEGORY

STUDENT'S USER CATEGORY

STUDENT'S USER CATEGORY

STUDENT'S USER CATEGORY

STUDENT'S USER CATEGORY

STUDENT'S USER CATEGORY

STUDENT'S USER CATEGORY

STUDENT'S USER CATEGORY

STUDENT'S USER CATEGORY

STUDENT'S USER CATEGORY

STUDENT'S USER CATEGORY

STUDENT'S USER CATEGORY

STUDENT'S USER CATEGORY

STUDENT'S USER CATEGORY

STUDENT'S USER CATEGORY

STUDENT'S USER CATEGORY

STUDENT'S USER CATEGORY

STUDENT'S USER CATEGORY

STUDENT'S USER CATEGORY

STUDENT'S USER CATEGORY

STUDENT'S USER CATEGORY

STUDENT'S USER CATEGORY

STUDENT'S USER CATEGORY

STUDENT'S USER CATEGORY

STUDENT'S USER CATEGORY

STUDENT'S USER CATEGORY

STUDENT'S USER CATEGORY

MUSIC & DANCE ARTISTS USER CATEGORY

CATEGORY

MUSIC & DANCE ARTISTS USER CATEGORY

MUSIC & DANCE ARTISTS USER CATEGORY

MUSIC & DANCE ARTISTS USER CATEGORY

MUSIC & DANCE ARTISTS USER CATEGORY

MUSIC & DANCE ARTISTS USER CATEGORY

MUSIC & DANCE ARTISTS USER CATEGORY

MUSIC & DANCE ARTISTS USER CATEGORY

MUSIC & DANCE ARTISTS USER CATEGORY

MUSIC & DANCE ARTISTS USER CATEGORY

MUSIC & DANCE ARTISTS USER CATEGORY

MUSIC & DANCE ARTISTS USER CATEGORY

MUSIC & DANCE ARTISTS USER CATEGORY

MUSIC & DANCE ARTISTS USER CATEGORY

MUSIC & DANCE ARTISTS USER CATEGORY

MUSIC & DANCE ARTISTS USER CATEGORY

MUSIC & DANCE ARTISTS USER CATEGORY

MUSIC & DANCE ARTISTS USER CATEGORY

MUSIC & DANCE ARTISTS USER CATEGORY

MUSIC & DANCE ARTISTS USER CATEGORY

MUSIC & DANCE ARTISTS USER CATEGORY

MUSIC & DANCE ARTISTS USER CATEGORY

MUSIC & DANCE ARTISTS USER CATEGORY

MUSIC & DANCE ARTISTS USER CATEGORY

MUSIC & DANCE ARTISTS USER CATEGORY

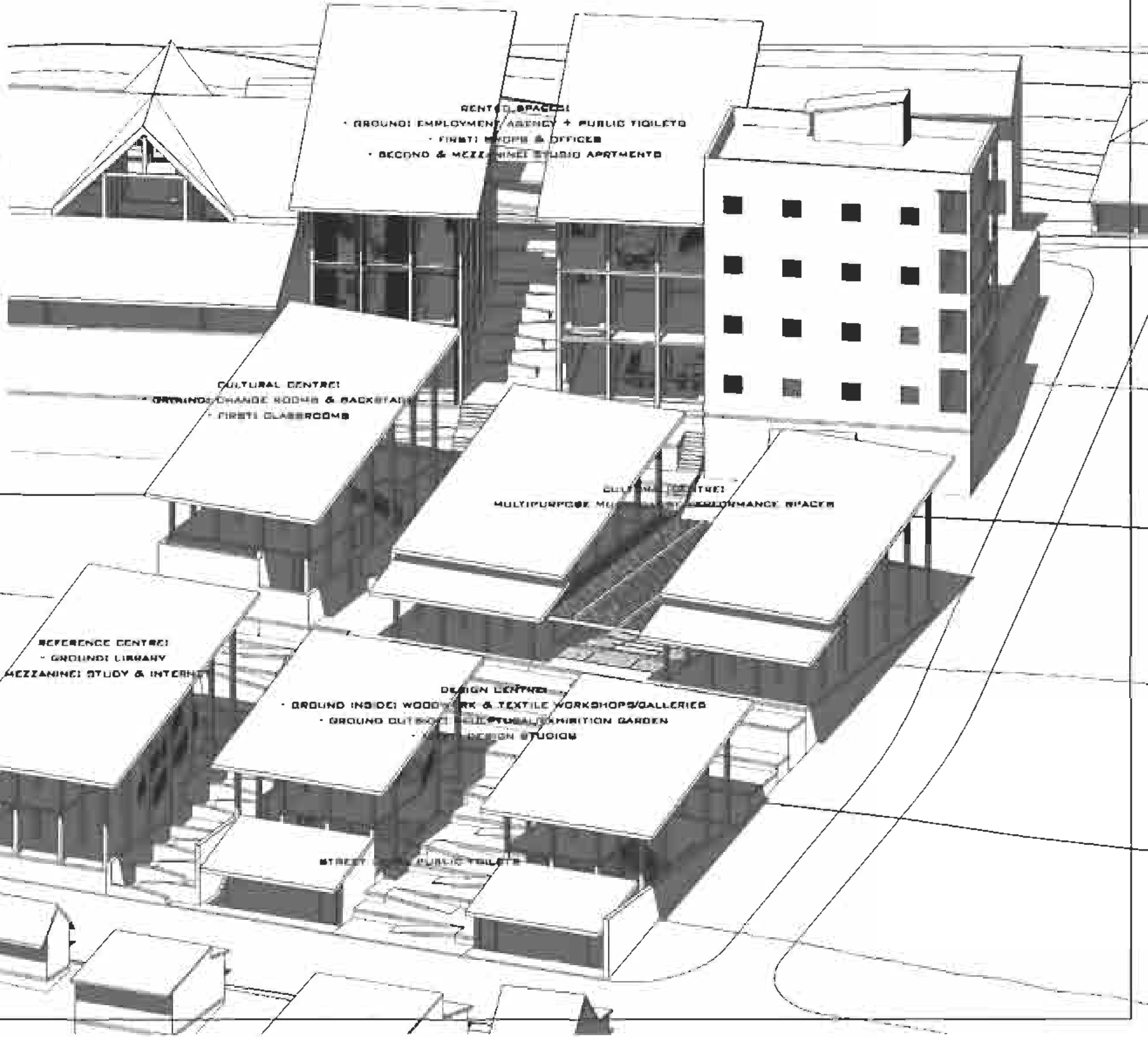
MUSIC & DANCE ARTISTS USER CATEGORY

MUSIC & DANCE ARTISTS USER CATEGORY

MUSIC & DANCE ARTISTS USER CATEGORY

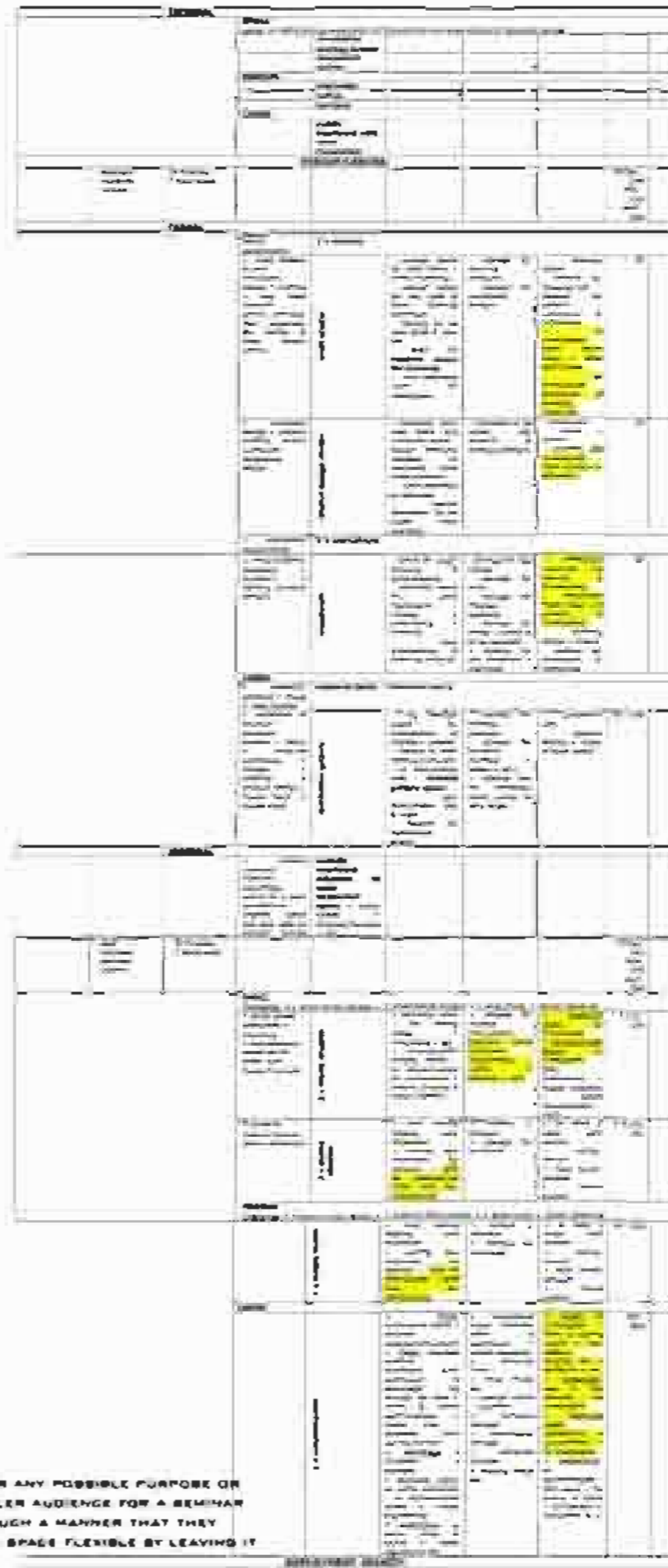
MUSIC & DANCE ARTISTS USER CATEGORY

MUSIC & DANCE ARTISTS USER CATEGORY



K. TECHNICAL DOCUMENTATION: THE DESIGN BRIEF

Area	Notes	Notes	Notes	Notes	Notes	Notes	Notes	Notes
1. WHY A PAIR OF CLASSROOMS?	BECAUSE WITH TWO CLASSROOMS, MORE OR LESS IDENTICAL, SEPARATED BY SUITABLE SUCCURABLE SCREENS, A Bigger ROOM CAN BE CREATED TO CATER FOR A Bigger AUDIENCE FOR DIFFERENT TYPES OF FUNCTIONS, SUCH AS SOCIAL GATHERINGS (COMMUNITY ASSOCIATIONS), PARTIES, SCHOOLS (CHILDREN OR ADULTS), AND RECEPTION ROOMS DURING EXHIBITION EVENTS, ETC...							
2. DECISIONS AROUND NUMBER OF USERS? WHY?	IT IS A TEST. THE FLEXIBILITY OF THE SPACES SHOULD SUGGEST OTHER FUNCTIONS & ACTIVITIES TO BE USED BY THE COMMUNITY IF THE EMPOWERMENT CENTRE IS UNSUCCESSFUL. OTHERWISE, IF IT DOES SUCCEED, AND THE NUMBER OF USERS GROWS, THEN THE EMPOWERMENT CENTRE AS A SATELLITE PROJECT IS A PHYSICAL GUIDELINE BUILDING FOR ITS FUTURE EXTENSIONS. THESE EXTENSIONS ARE NECESSARILY NOT ALLOCATED ON-SITE BUT A NETWORK OF LINKED EMPOWERMENT CENTRES SHOULD BE CREATED IN ASSOCIATION WITH A PUBLIC TRANSPORT SYSTEM.							
3. WHY ONLY 1 CLASSROOM PER FLOOR?	<p>FIELD:</p> <ul style="list-style-type: none"> BUSINESS ENTREPRENEURSHIP TEXTILE DESIGN WOODWORK DESIGN <p>LEVELS: 1 SEMESTER-LEVEL</p> <ul style="list-style-type: none"> BEGINNER INTERMEDIATE ADVANCED <p>CLASSROOMS SHOULD ON A YET BASIS I.E. PRACTICALS & CLASSES & LECTURES TO BE RUN SIMULTANEOUSLY SO THAT THE CENTRE IS POPULATED THROUGHOUT THE DAY.</p>							
4. WHY A LEVEL = 6 MONTHS?	IT IS AN ASSUMPTION AND APPROXIMATION IF BASIC BUSINESS MANAGEMENT & ENTREPRENEURSHIP IS BEING TAUGHT AT THE CENTRE, THE AIM IS TO GUIDE THE STUDENT IN SETTING UP THEIR ENTERPRISES OR COMPANIES, GIVE THEM ADVICE AND COUNSELLING ON BUSINESS RELATIONS AND LONG-TERM BENEFITS. THEREFORE, ACADEMIC CREDITS ARE NOT REALLY NECESSARY AT THIS STAGE. AT A LATER STAGE, AFTER THE PRELIMINARY PHASE, IF THE PROJECT DOES GO AHEAD, IT WILL BE PRIMAORDIAL TO CONSULT TERTIARY EDUCATION REPRESENTATIVES ON AN APPROPRIATE CURRICULUM.							
5. WHY NOT A SIMPLE COMMUNITY MULTIPURPOSE CENTRE?	WITH A MULTIPURPOSE CENTRE, SPACES ARE RAUGHLY LAID TOGETHER WITH NO SPECIFIC SPATIAL QUALITY FOR ANY POSSIBLE PURPOSE OR ACTIVITY. THEREFORE, FOR INSTANCE, A SIMPLE HALL DOES NOT MAXIMIZE ITS CAPABILITIES OF HOLDING A SMALLER AUDIENCE FOR A SEMINAR OR A CLASS. THEREFORE, IN THE DESIGN PROCESS HERE, ACTIVITIES ARE ANTICIPATED AND ACCOMMODATED IN SUCH A MANNER THAT THEY FORM THE PRIMARY FUNCTION OF THE SPACE, ALLOWING OTHER UNANTICIPATED EVENTS TO HAPPEN, MAKING THE SPACE FLEXIBLE BY LEAVING IT OPEN PLAN & PROVIDING FOR SERVICE AREAS (STORAGE, BATHROOMS, RECEPTION, ETC).							



6. SPECIAL SPACES TO GIVE ATTENTION & GIVE DETAILS - TRANSLATING DIFFERENT CONCEPTS

1. COMMON SPACE - FOR THE PARTICIPATION OF COMMUNITY TO MEET AS WELL AS TO BE HELD BY THE GOVERNMENT GROUPS THAT MANAGE IT. (SPECIAL) - TO BE HELD BY THE COMMUNITY GROUPS & COMMON SPACE ADMINISTRATION FOR A PUBLIC PUBLIC SQUARE - PUBLIC SQUARE ALIGNED TO PUBLIC ACTIVITIES BY PROVIDING PLATFORMS WITH SEATERS, STALLS - TABLES WITH SEATERS - A INTERNAL - LOW WALLS - RETAIL PUBLIC TRANSPORTATION (STATION) OF HIGH QUALITY - TRAVEL CENTRES - INCLUDING OF THE COMMON TRANSPORTATION WITH THE CULTURAL (CULTURAL REPRESENTATION & STATION) - THE STATION TRANSLATED IN SOME SORT OF CULTURAL ARCHITECTURE - UNDER EXAMINATION OF EXISTING URBAN ARCHITECTURE, UNDER BALL BASES OF THE SPACE PERHAPS, ETC.

7. PROJECT PROGRAMME - I.E. STAGES

1ST STEP: SMALL CHANGES (CONCEPT: URBAN FOUNTAIN & LAUNDRY FACILITIES - BY TAXI STOP TO GIVE ATTENTION & INVESTMENT IN BETWEEN BUILDINGS)

2ND STEP: TO BE HELD BY COMMUNITY GROUPS (CONCEPT: EMPLOYMENT CENTRE AS A EXAMPLE OF LOCAL BUILDING (SQUARE) & URBAN URBAN PLACES & AT URBAN & COMMUNITY SCALES)

3RD STEP: COMMUNITY (EMPLOYMENT) COMMUNITY FROM OVER ALL (RECOMMENDING & MANAGEMENT OF URBAN & FUTURE PROJECTS THEY WILL IDENTIFY ETC)

E R R E T Z M R P O W P M F L V I L L E M M I

L. TECHNICAL DOCUMENTATION: TECTONICS EXPLORATION

STRUCTURE: TIMBER POST-AND-LINTEL STRUCTURE COMBINED WITH STEREOTOMICS THEORY

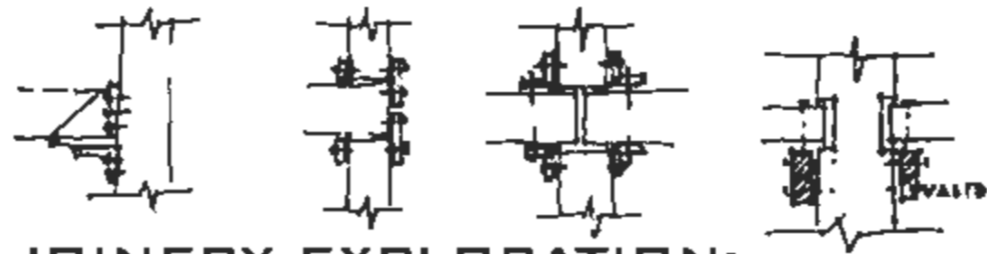
1. STEREOTOMICS THEORY

- HEAVY BASE - CAVE (GROUND FLOOR) - WHERE THE OPENINGS BECOME VIEW FRAMES
- SUSPENDED FRAMED UPPER FLOORS = PLATFORMS - WHERE THE FACADES ARE FULLY OPEN TO UNDERLINE THE HORIZON AND NATURE OUTSIDE
- EMPOWERMENT CENTRE'S HEAVY BASE = LOADBEARING CONCRETE WALLS (MAYBE WITH STONE OUTSIDE FACE/SKIN)
- EMPOWERMENT CENTRE'S PLATFORMS = SUSPENDED



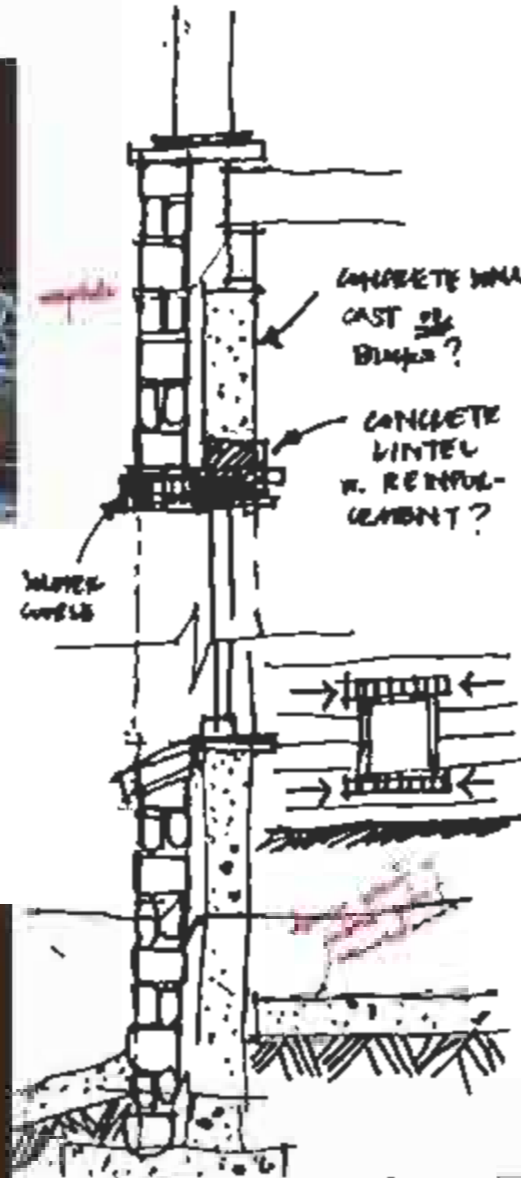
2. TIMBER POST-AND-LINTEL TYPOLOGY:

- TIMBER POST-AND-LINTEL STRUCTURE TO CARRY ROOF & SUSPENDED FLOORS (AS WELL AS THE DIFFERENT SCREENS AND ALL OTHER DIFFERENT LOADS)
- ROOF = TIMBER LIGHTWEIGHT STRUCTURE WITH CORTEN CORRUGATION CLADDING
- SUSPENDED TIMBER FLOORS - BEAM AND JOIST SYSTEM WITH TIMBER FLOOR BOARD CLADDING



JOINERY EXPLORATION:

DIFFERENT WAYS TO PUT TOGETHER VERTICAL AND HORIZONTAL ELEMENTS TOGETHER USING GALVANISED STEEL ELEMENTS (PLATES, NUTS, BOLTS, ETC)



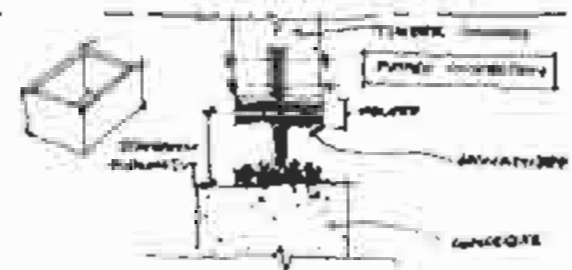
GROUND CONNECTIONS:

1. LOADBEARING WALL

- WALL CARRIED BY CONCRETE FOOTING
- CONCRETE SURFACE BED RESTING ON COMPACTED STABILIZED EARTH
- WATERPROOFING WRAPPING SURFACE BED TUCKED IN MOVEMENT JOINT BETWEEN WALL AND SURFACE BED, PROTECTING THE SURFACE BED

2. TIMBER POST

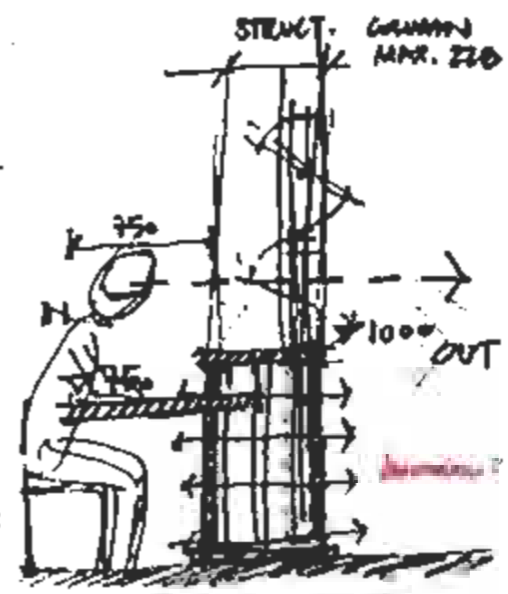
- TIMBER POST; DOUBLE COLUMN SYSTEM WITH 70x220 MEMBERS (4M TALL)
- TIMBER POST RESTING ON GALVANISED STEEL PLATE
- GALVANISED STEEL PLATE SECURED (PIN CONNECTION) ONTO A CONCRETE BASE CARRIED BY A CONCRETE FOOTING INTO THE GROUND



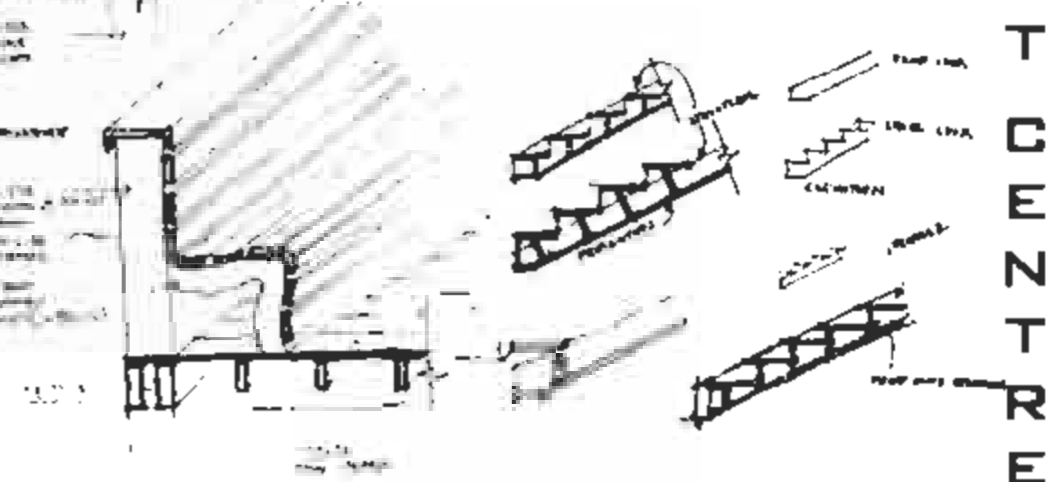
EXPLORING THE SHADING & WEATHERING SCREENS:



- DECISIONS ON STRUCTURAL MODULE IN RELATION WITH STRUCTURAL TIMBER CAPACITIES (2,500 MM)
- DECISION ON PROPORTIONS & HEIGHTS IN RELATION WITH ANTHROPOLOGICAL SITUATIONS OF SEATING, WALKING, STANDING, ETC.

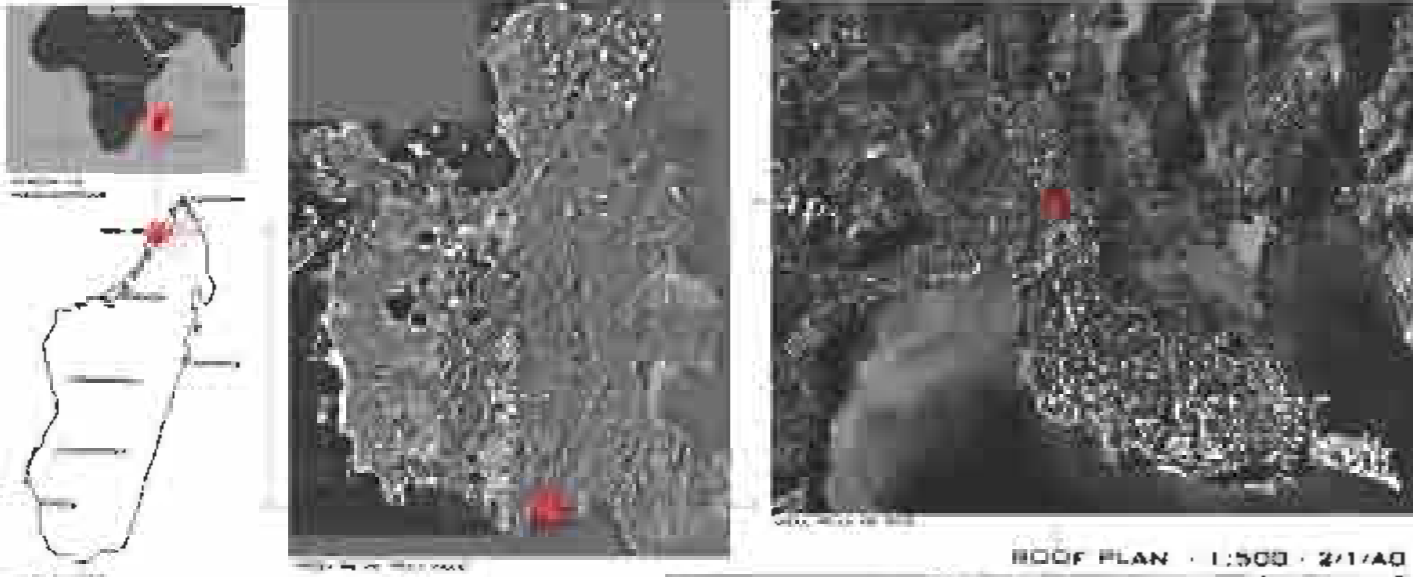


DETAIL ELEMENTS: BENCH BALUSTRADE & STAIRS



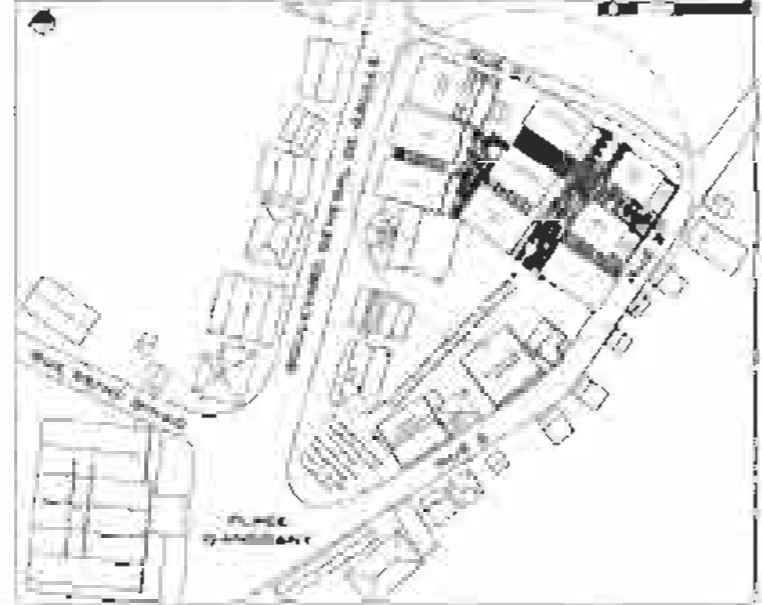
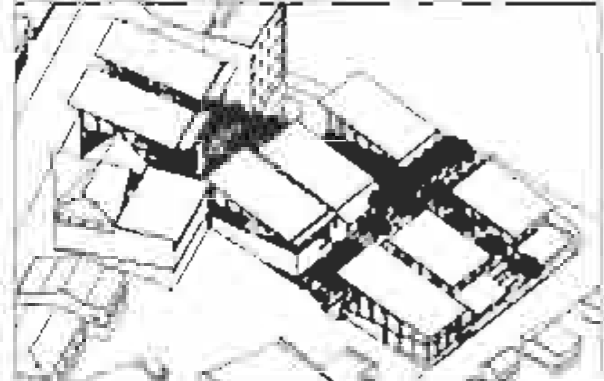
EMPOWERMENT CENTRE

CONTEXTUAL DRAWINGS



ROOF PLAN · 1:500 · 2/1/A0

ENSEMBLE - SERIAL VIEW · 1/1/A0

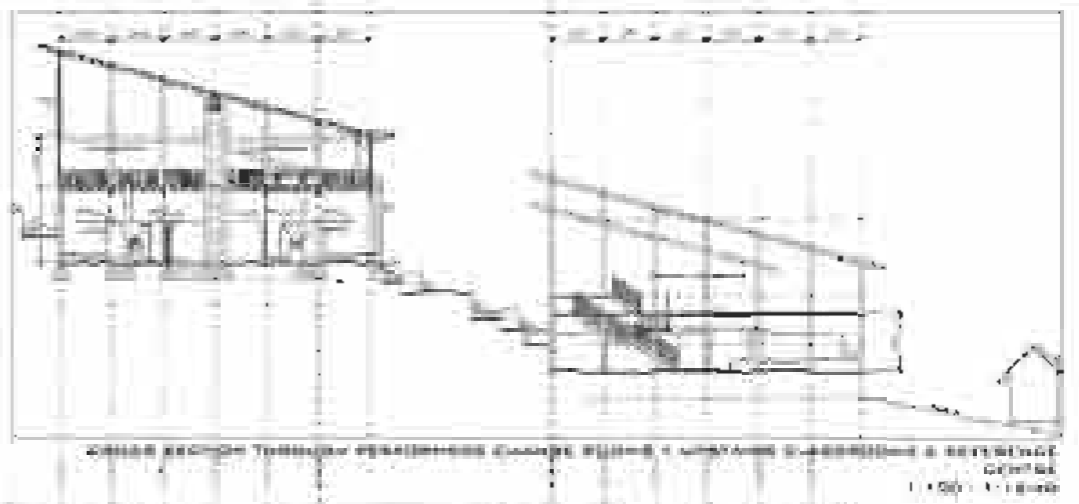


SITE PLAN · 1:200 · 3/1/A0

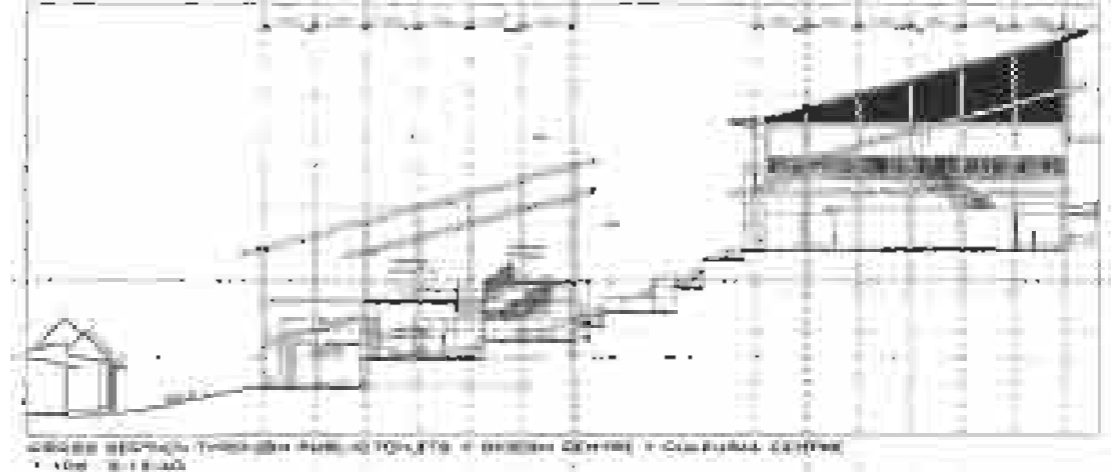


I
E
V
I
E
E
M
P
O
W
E
R
R
Z
E
T
Z
E
C
E
N
T
R
E

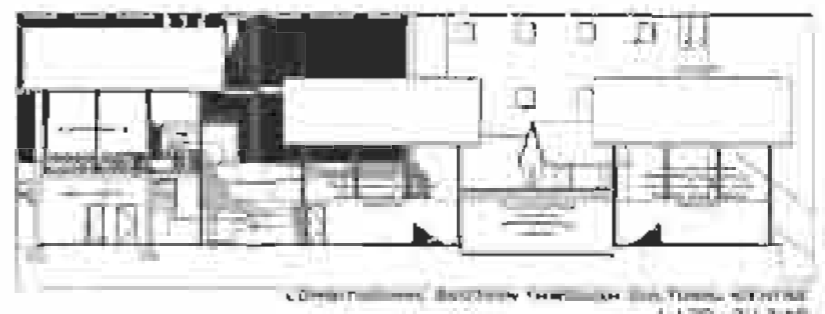
CULTURAL & REFERENCE CENTRES - SECTIONS



CROSS SECTION THROUGH REFERENCE & DESIGN CENTRE · 1:100 · 1/1/B00



CROSS SECTION THROUGH REFERENCE & DESIGN CENTRE · 1:100 · 2/1/B00



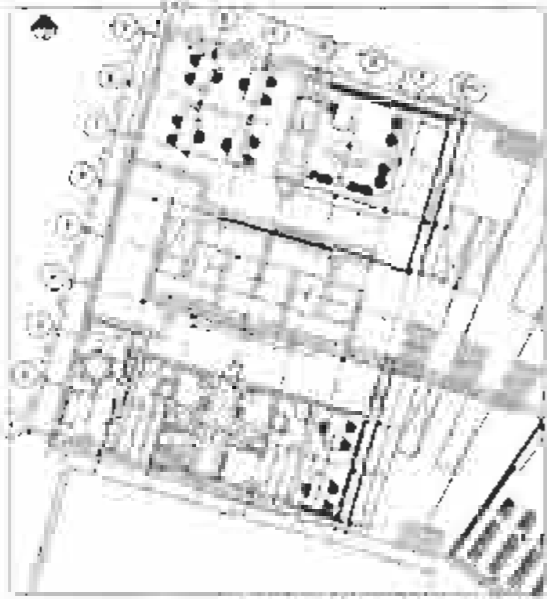
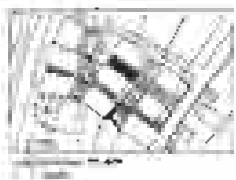
CROSS SECTION THROUGH REFERENCE & DESIGN CENTRE · 1:100 · 3/1/B00



LONGITUDINAL SECTION THROUGH REFERENCE & DESIGN CENTRE · 1:100 · 4/1/B00

I
E
V
I
E
E
M
P
O
W
E
R
R
Z
E
T
Z
E
C
E
N
T
R
E

RENTABLE SPACES - GROUND FLOOR PLANS



GROUND FLOOR PLAN
1:100 - 1/2/AD



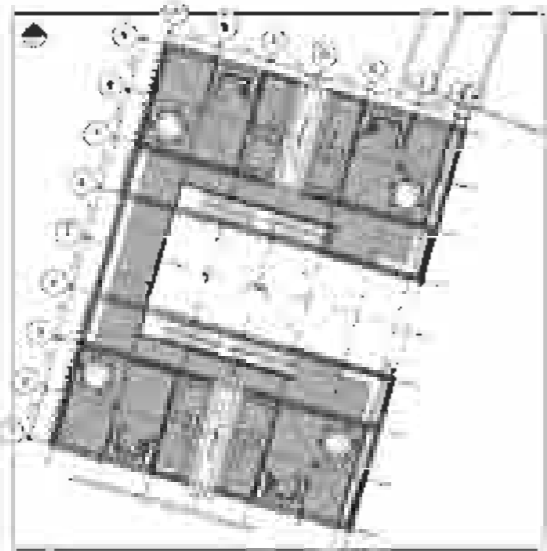
ENTRANCE FLOOR PLAN
1:100 - 2/2/AD



FIRST FLOOR PLAN
1:100 - 3/2/AD



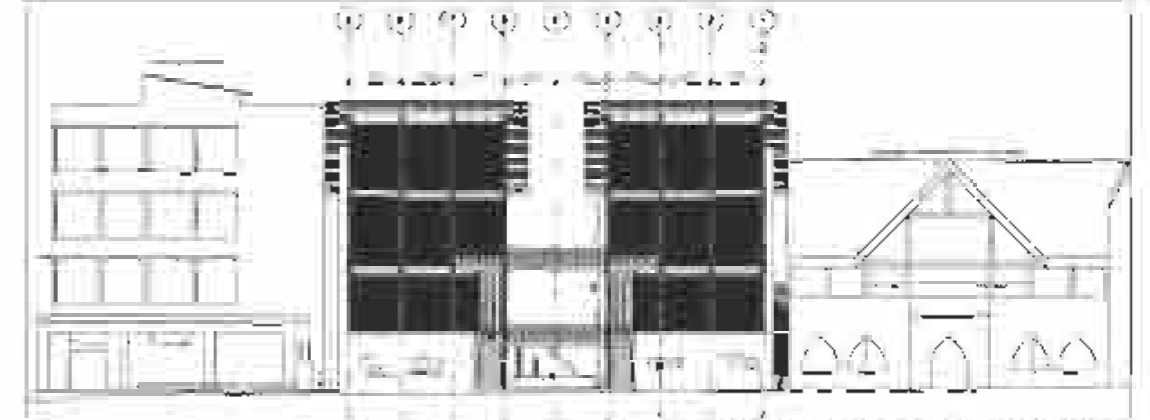
SECOND FLOOR PLAN
1:100 - 4/2/AD



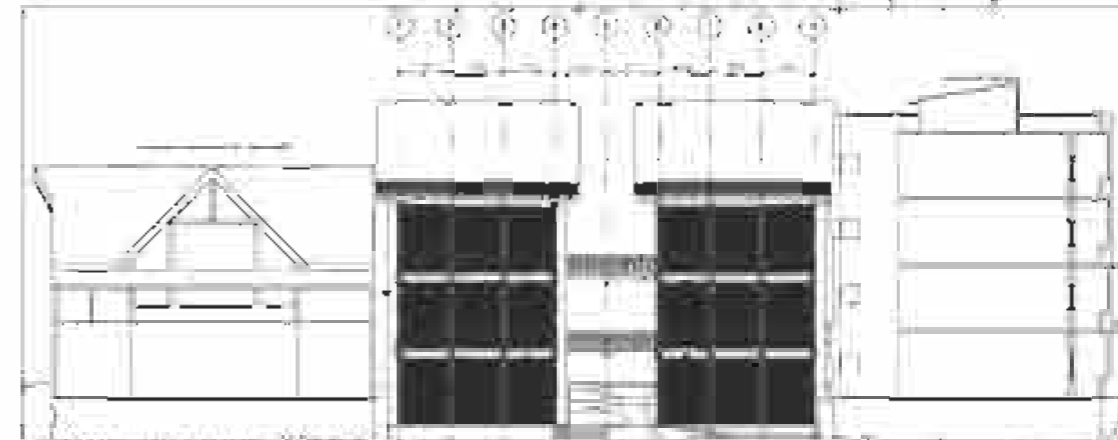
SECOND FLOOR MEZZANINE
FLOOR PLAN
1:100 - 5/2/AD

H E L L V I L L E E M P O W E R M E N T C E N T R E

RENTABLE SPACES - SIDE ELEVATIONS



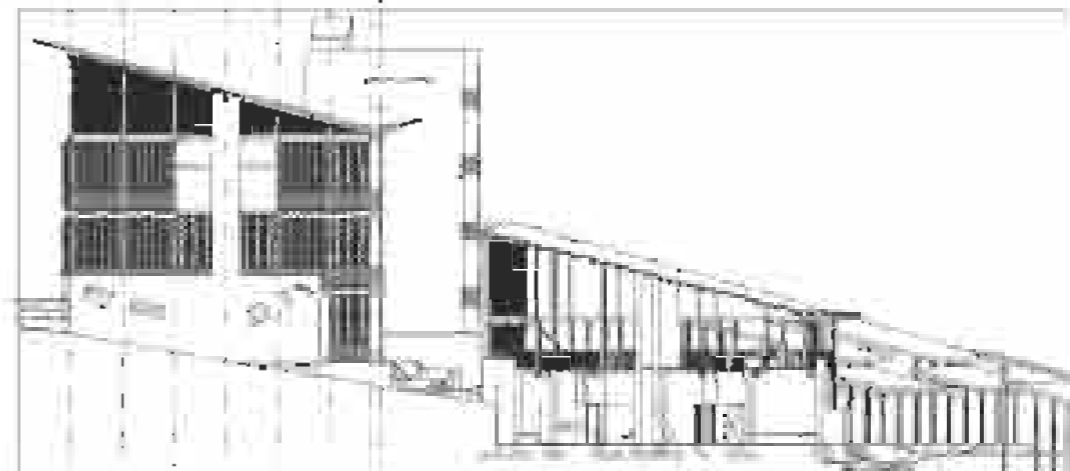
RENTABLE SPACES & EMPLOYMENT AGENCY
WEST ELEVATION
1:100 - 1/3/AD



RENTABLE SPACES & EMPLOYMENT AGENCY
EAST ELEVATION
1:100 - 2/3/AD



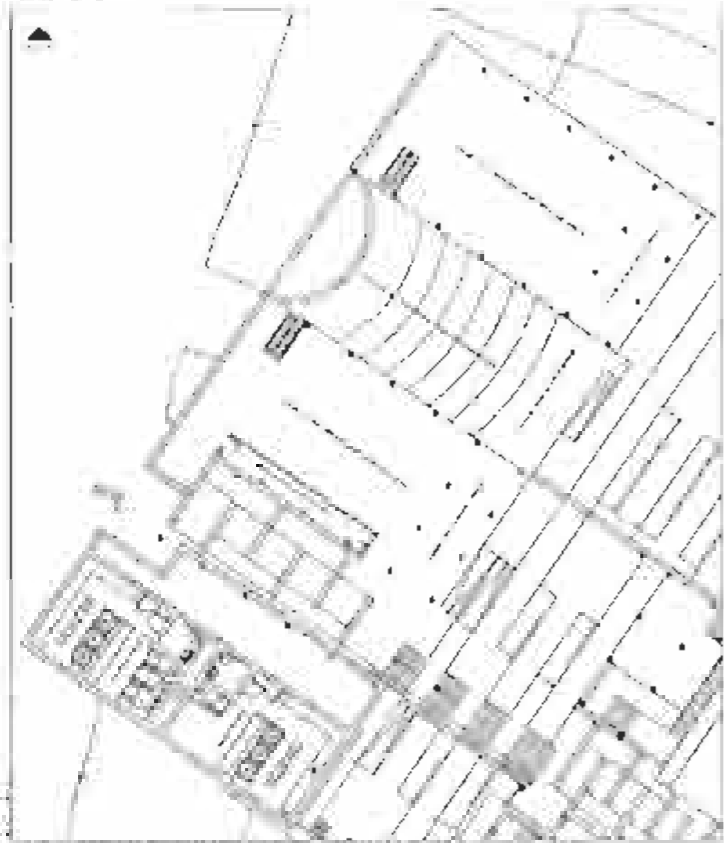
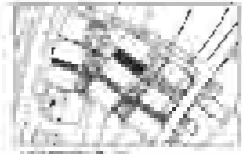
RENTABLE SPACES & EMPLOYMENT AGENCY
SOUTH ELEVATION
1:100 - 4/3/AD



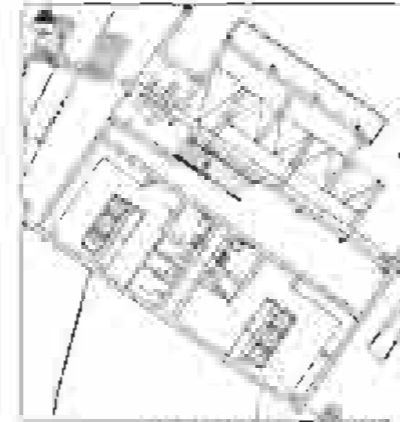
RENTABLE SPACES & EMPLOYMENT AGENCY
NORTH ELEVATION
1:100 - 5/3/AD

H E L L V I L L E E M P O W E R M E N T C E N T R E

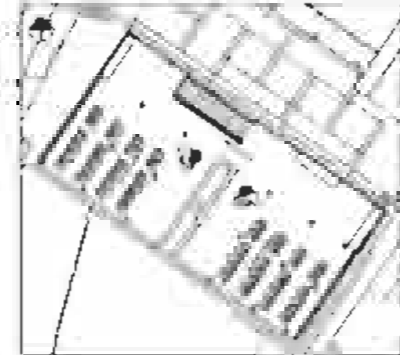
CULTURAL CENTRE - FLOOR PLANS



CULTURAL CENTRE GROUND FLOOR PLAN
1:100 - 10/160



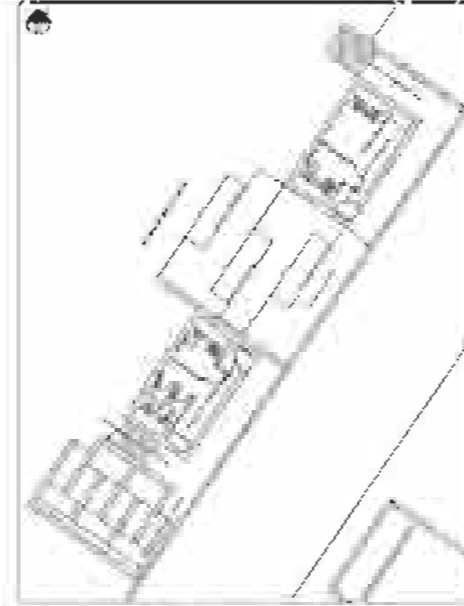
CULTURAL CENTRE
ENTRANCE FLOOR PLAN
1:100 - 2/2140



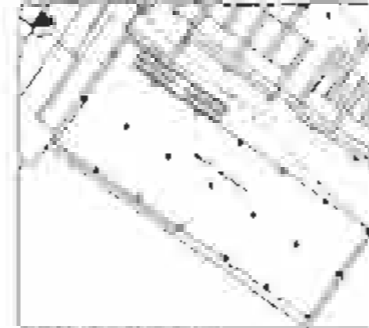
CULTURAL CENTRE
FIRST FLOOR PLAN
1:100 - 3/3140

I
L
V
L
E
E
O
P
O
E
R
Z
E
I
Z
C
R
E

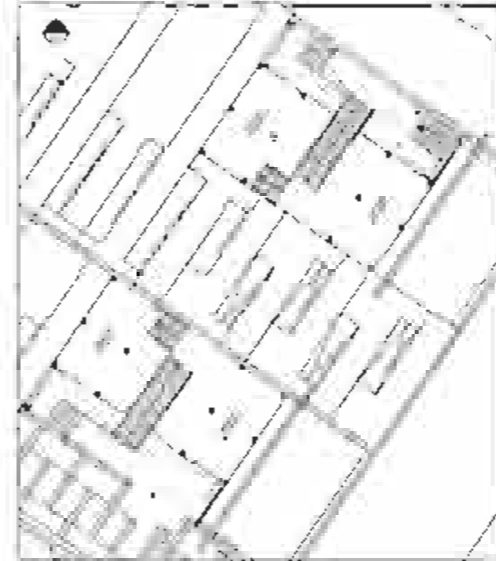
REFERENCE & DESIGN CENTRES - FLOOR PLANS



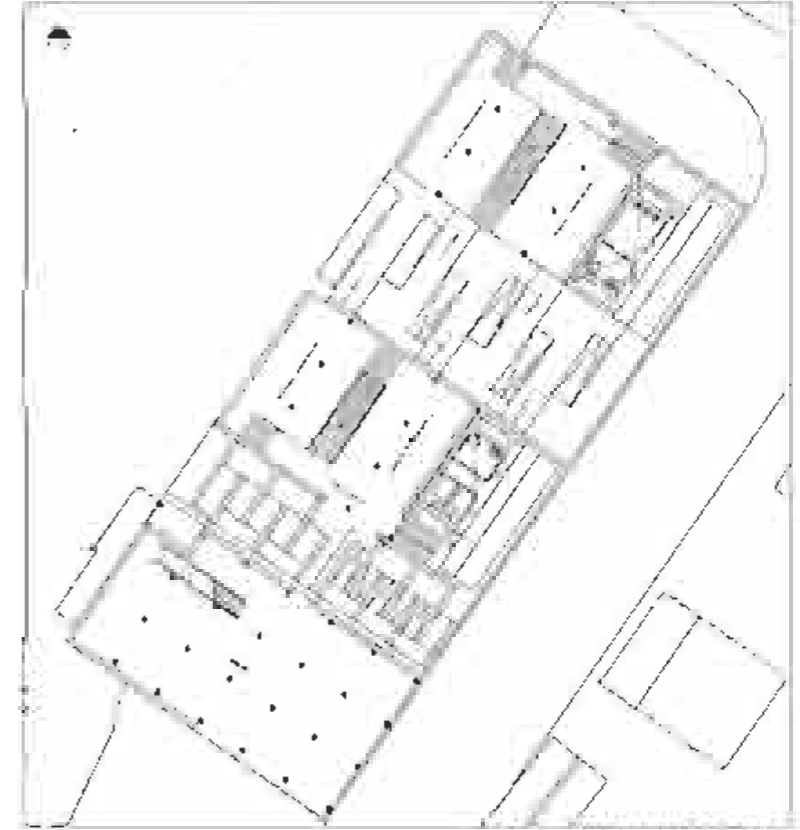
STREET LEVEL PUBLIC TOURIST
GROUND FLOOR PLAN
1:100 - 1/1440



REFERENCE CENTRE
MEETING FLOOR PLAN
1:100 - 2/440



REFERENCE CENTRE
MEETING FLOOR PLAN
1:100 - 3/440

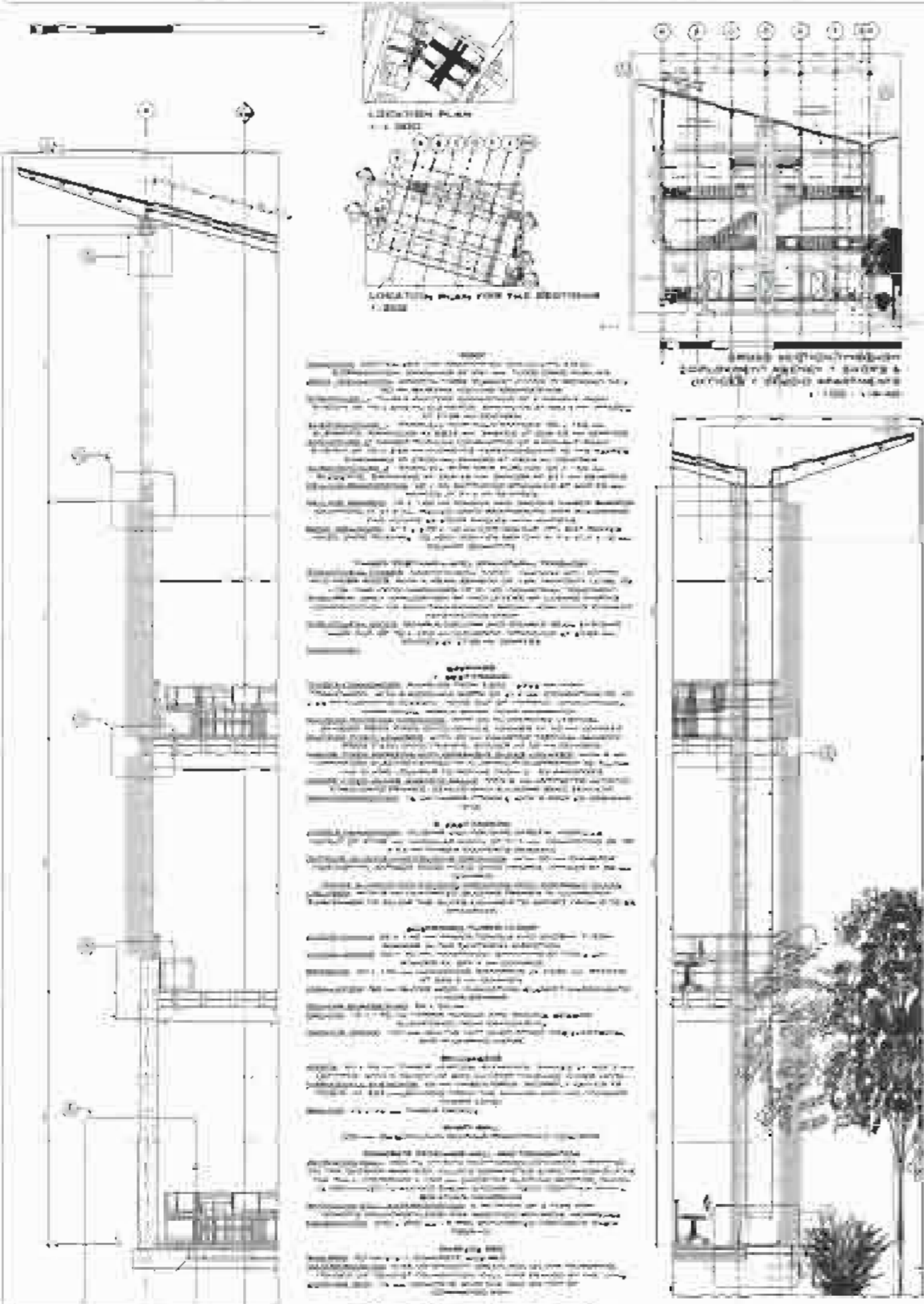


REFERENCE & DESIGN CENTRES
GROUND FLOOR PLAN
1:100 - 3/440

I
L
V
L
E
E
O
P
O
E
R
Z
E
I
Z
C
R
E

RENTABLE SPACES - 1.100 CROSS & 1.20 WALL SECTIONS

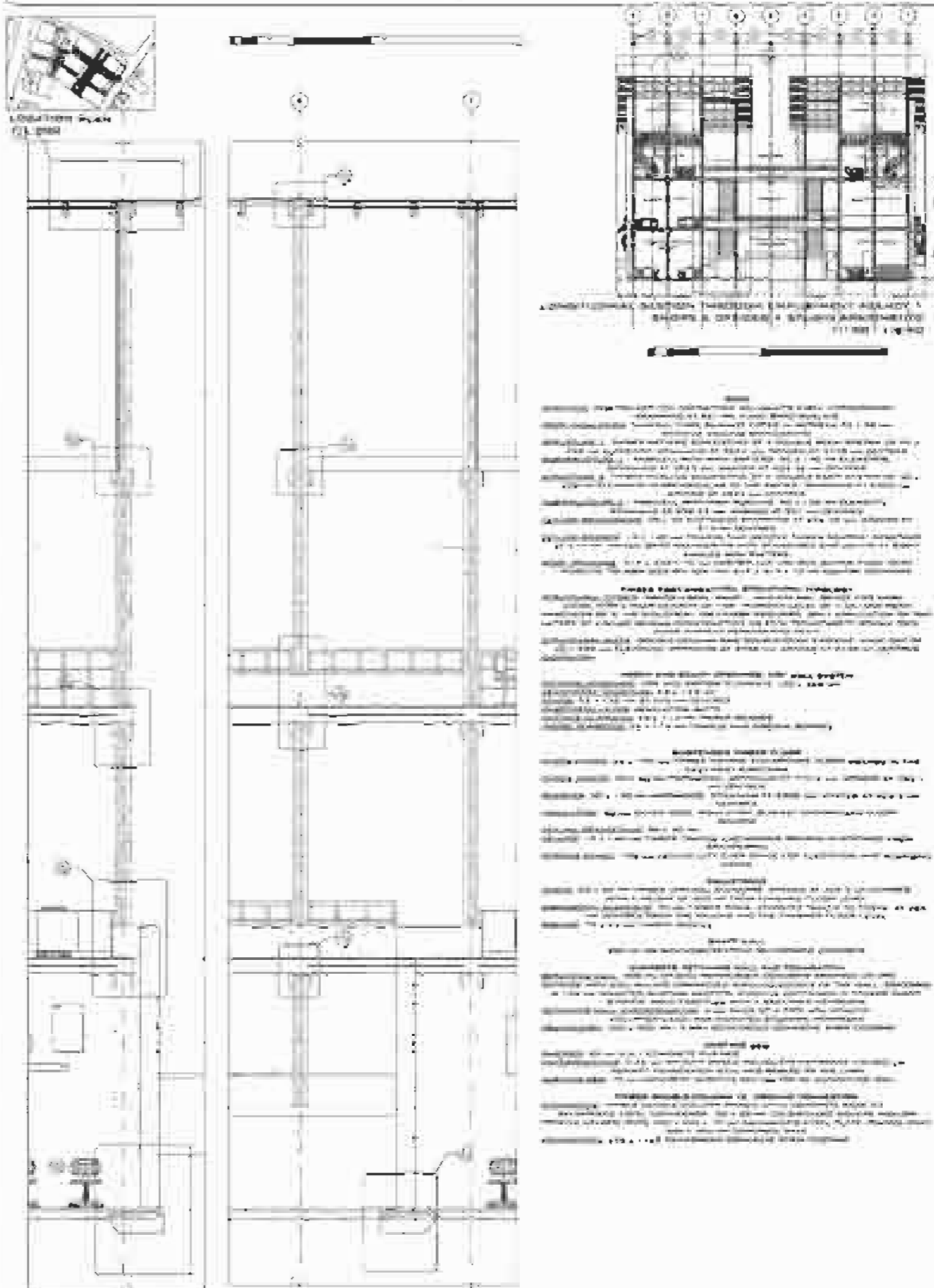
RENTABLE SPACES - 1.100 LONGITUDINAL & 1.20 WALL SECTIONS



WALL SECTION 1
1:20 - 2/6/A0

WALL SECTION 2
1:20 - 3/6/A0

J
E
L
L
V
I
L
L
E
E
M
P
O
W
E
R
M
E
N
T
C
E
N
T
R
E



WALL SECTION 3
1:20 - 2/9/A0

WALL SECTION 4
1:20 - 3/9/A0

J
E
L
L
V
I
L
L
E
E
M
P
O
W
E
R
M
E
N
T
C
E
N
T
R
E

